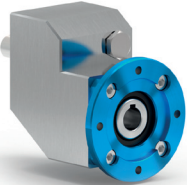

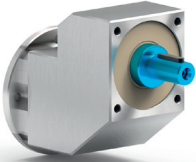

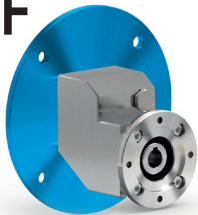
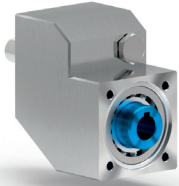


How to order

Codifica

P	411I	-F	1.57	C
Type <i>Tipo</i>	Size <i>Grandezza</i>	Mounting <i>Montaggio</i>	Ratio <i>Rapporto</i>	Output shaft <i>Albero lento</i>
P 	411I	-N 	See technical data table <i>Vedi tabelle dati tecnici</i>	
M 		-F 		C -> ø19
B 				

4**-T****B3****-**

With Type M specify terminal box position
Con tipo M specificare posizione morsettiera

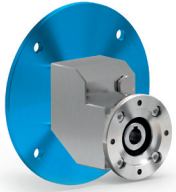
Output flange
Flangia uscita

Motor size
Grandezza motore

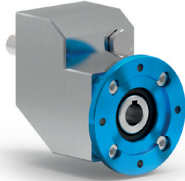
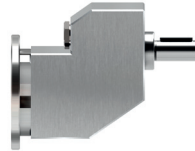
Mounting position
Posizione di montaggio

Input bore
Foro entrata

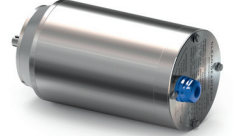
Terminal box position
Posizione morsettiera



Flange
Flange

**B3**

Standard bore
Foro standard

A

N Without flange
Senza flangia

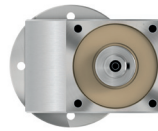
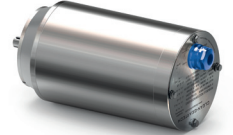
4 -> $\varnothing 200$

IEC B14

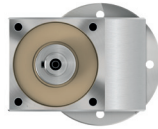
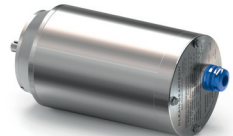
-Q -> 71 B14 ($\varnothing 105$)

-R -> 80 B14 ($\varnothing 120$)

-T -> 90 B14 ($\varnothing 140$)

B6**B**

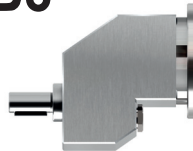
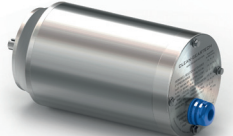
Without flange
Senza flangia

**B7****C**

-1 -> $\varnothing 14$ (71 B5)

-2 -> $\varnothing 19$ (80 B5)

-3 -> $\varnothing 24$ (90 B5)

B8**D****V5****V6****V8**