

4111

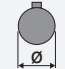

38 Nm

RCI series Full stainless steel ratio multipliers

Riduttori ad uno stadio completamente in acciaio inox

The dynamic efficiency is **0.98** for all ratios

Input speed (n_1) = 1400 min⁻¹

Output speed n_2 [min ⁻¹]	Ratio i	Motor power P_{1M} [kW]	Output torque M_{2M} [Nm]	Service factor f.s	Nominal power P_{1R} [kW]	Nominal torque M_{2R} [Nm]	B5 motor flanges			B14 motor flanges			Output shaft 	Ratios code 
							-	-	-	-Q	-R	-T		
891	1.57	1.5	16	1.3	1.9	20	-	-	-	C	C		01	
493	2.84	1.5	28	1.2	1.8	35	-	-	-	C	C		02	
425	3.29	1.5	33	1.2	1.7	38	-	-	-	C	C		03	
362	3.87	1.5	39	1.0	1.5	40	-	-	-	C	C	standard ø19	04	
303	4.62	1.5	46	1.0	1.5	47	-	-	-	C	C		05	
222	6.30	1.1	46	1.0	1.1	46	-	-	-	C	C		06	
170	8.22	0.55	30	1.3	0.69	38	-	-	-	C	C		07	
129	10.86	0.37	27	1.0	0.39	28	-	-	-	C	C		08	

Motor flanges available
Flange motore disponibili

 B) Supplied with reduction bushing
Fornito con bussola di riduzione

B) Available on request without reduction bushing
Disponibile a richiesta senza bussola di riduzione

 C) Motor flange holes position
Posizione fori flangia motore

Lubrication

Lubrificazione

Unit 4111 is supplied with synthetic oil to assure long life lubrication.
Food grade oil is available on request.

See Table 1 for lubrication and recommended quantity.

See Table 2 for possible radial and axial loads on the gearbox.

Il riduttore tipo 4111 viene fornito con olio sintetico e lubrificazione tipo "long life".

Disponibile a richiesta olio alimentare.

Vedi Tabella 1 per oli e quantità consigliati.

Vedi Tabella 2 per i carichi radiali e assiali applicabili al riduttore.

**Oil quantity for
all positions:
0.14Lt.**

Quantità olio per tutte
le posizioni: 0.14Lt

Agip
Telium VSF 320

Shell
Omala S4 WE 320

Radial and axial loads

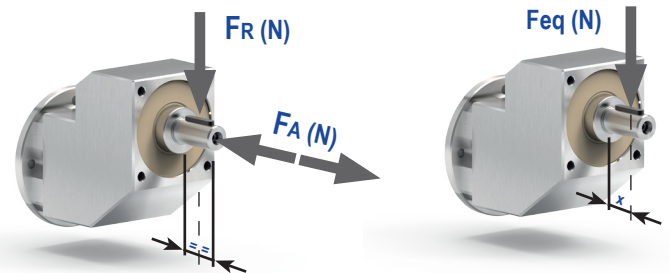
Carichi radiali e assiali

Output shaft

Albero di uscita

n_2 [min ⁻¹]	F_A [N]	F_R [N]
700	182	910
600	200	1000
400	230	1150
300	250	1250
200	290	1450
140	320	1600

$$F_{eq} = F_R \cdot \frac{48.5}{X + 28.5}$$



Tab. 1

Tab. 2

38
Nm

4111

P4111-N... **Basic gearbox**
Riduttore base

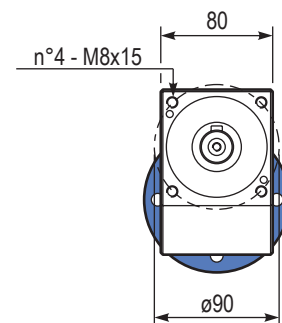
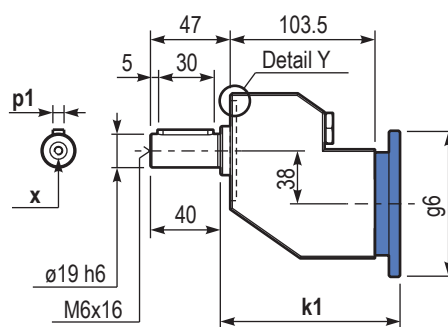
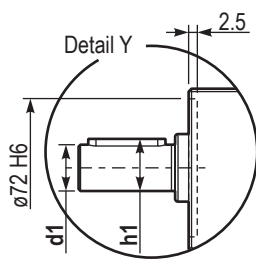
Gearbox weight
peso riduttore **5.5 kg**

Output shafts / *albero di uscita*

	Shaft - d1	p1	h1	x
Standard	∅ 19x40	6	21.5	M6x16

Input flanges / *flange di entrata*

	Kit code	k1	g6
71 B14	KI634047	128.5	105
80 B14	KI634046	129.5	120
90 B14	KI634041	130.5	140



P4111-F... **Output flange**
Flangia di uscita

