

Aluminum in line gearboxes

A modular and compact product

Alloy housing

Is vacuum impregnated (MIL-STD 276) for protection and sealing. No secondary finish required but readily accepts paint

Flange

Fully modular to IEC and Compact integrated motor. NEMA C flange

Removable inspection cover

Allows periodic inspection of gearing during routine maintenance

Oil seals

Two oil seals on request

Output shaft

With well proportioned bearings

Lubricated for life with synthetic oil with operative range from -15° to $+130^{\circ}\text{C}$



Foot prints

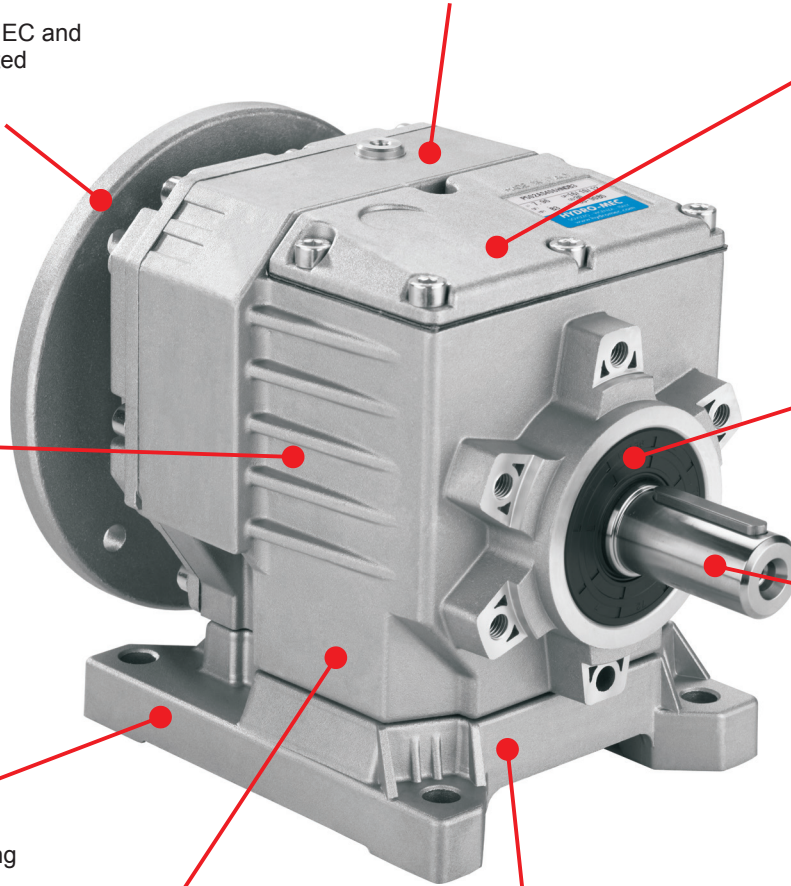
Compatible to the main standard of the market.

Feet

Removable feet. With patented locking system.

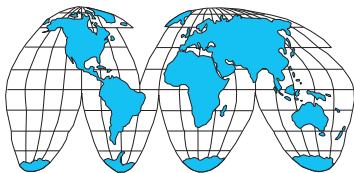
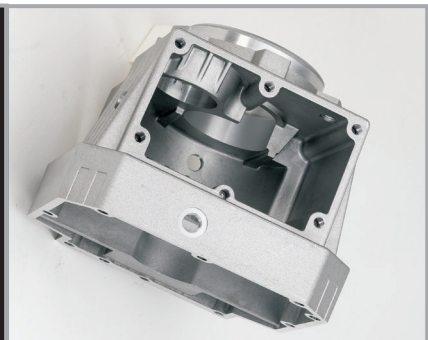
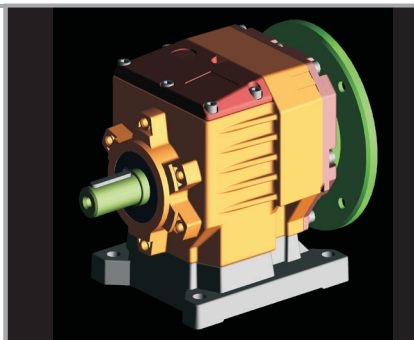
Gears

Hardened and ground gears.



Single-piece aluminum alloy housing

Combines light weight with high tensile strength. Precision machined for alignment of bearings and gearing



World wide sales network.

