

#### QUICK SELECTION / Selezione veloce

input speed ( $n_1$ ) = 1400 min<sup>-1</sup>

Output Speed $n_2$ [min <sup>-1</sup> ]	Ratio $i$	Motor power $P_{1M}$ [kW]	Output torque $M_{2M}$ [Nm]	Service factor f.s.	Nominal power $P_{1R}$ [kW]	Nominal torque $M_{2R}$ [Nm]	Available B5 motor flanges			Available B14 motor flanges		Dynamic efficiency <b>RD</b>	Tooth Module  [mm]	Ratios code 
							-A	-B	-C	-P	-Q			
							56	63	71	63	71			
47	<b>30.1</b>	0.25	38	1.4	<b>0.36</b>	<b>55</b>				<b>C</b>		74	2.2	01
33	<b>43.0</b>	0.25	53	1.0	<b>0.26</b>	<b>55</b>				<b>C</b>		72	2.2	02
23	<b>60.2</b>	0.25	62	0.9	<b>0.22</b>	<b>55</b>				<b>C</b>		60	2.4	03
15.5	<b>90.3</b>	0.12	42	1.3	<b>0.16</b>	<b>55</b>				<b>C</b>		57	1.6	04
11.6	<b>120</b>	0.12	52	1.1	<b>0.13</b>	<b>55</b>				<b>C</b>		53	2.5	05
8.8	<b>159</b>	0.12	64	0.9	<b>0.10</b>	<b>55</b>				<b>C</b>		49	1.8	06
7.1	<b>198</b>	0.12*	55	<0.8	<b>0.09</b>	<b>55</b>				<b>C</b>		47	1.5	07
5.4	<b>258</b>	0.12*	55	<0.8	<b>0.07</b>	<b>55</b>				<b>C</b>		45	1.2	08
4.7	<b>301</b>	0.12*	39	<0.8	<b>0.05</b>	<b>39</b>				<b>C</b>		40	1.0	09
3.2	<b>439</b>	0.12*	39	<0.8	<b>0.04</b>	<b>39</b>				<b>C</b>		36	0.72	10

**A) Motor Flanges Available**  
Flange Motore Disponibili

**B) Supplied with Reduction Bushing**  
Fornito con Bussola di Riduzione

**B) Available on Request without reduction bushing**  
Disponibile a Richiesta senza Bussola di Riduzione

**C) Motor Flange Holes Position**  
Posizione Fori Flangia Motore

\* Power higher than the maximum one which can be supported by the gearbox. Select according to the torque  $M_{2R}$   
Potenza superiore a quella massima sopportabile dal riduttore. Selezionare in base al momento torcente  $M_{2R}$

**EN** Unit **P45** is supplied with synthetic oil, providing "long life" lubrication. For mounting position V5-V6 please contact us. See table 1 for lubrication and recommended quantity. In table 2 please see possible radial loads and axial loads on the gearbox.

**I** Il riduttore tipo **P45** viene fornito lubrificato a vita con olio sintetico. Per posizioni V5-V6 contattare il ns. servizio tecnico. Vedi tab.1 per oli e quantità consigliati. In tab.2 sono presenti i carichi radiali e assiali applicabili al riduttore.

**D** Für die Lebensdauerschmierung ist das Getriebe der Größe **P45** mit synthetischem Öl befüllt. Bei Einbaulage V5 oder V6 bitten wir um Rücksprache. In Tabelle 1 ist die Schmiermenge und das empfohlene Schmiermittel angegeben. In Tabelle 2 sind die zulässigen Radial- und Axialbelastungen des Getriebes aufgeführt.

**F** Le réducteur de type **P45** est fourni lubrifié à vie avec de l'huile synthétique. Concernant les positions V5.V6, contactez notre service d'assistance technique. Voir tableau 1 concernant les huiles et les quantités conseillées. Les charges radiales et axiales applicables au réducteur sont précisées dans le tableau 2.

**E** El reductor tamaño **P45** se suministra, lubricado de por vida con aceite sintético. Para las posiciones V5 y V6 contactar con nuestro servicio técnico. Ver tabla 1, para cantidades y aceites recomendados. En la tabla 2, se encuentran las cargas radiales y axiales admitidas por el reductor.

#### LUBRICATION P45 Oil

Common lubrication 0.17 l (A + B)



**SHELL** Omala S4 WE 320

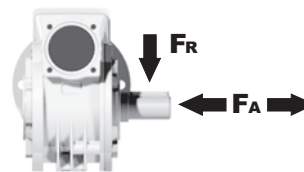
**ENI** Telium VSF 320

For all details on lubrication and plugs check our website **tab. 1**  
Per maggiori dettagli su lubrificazione e tappi olio vedi il nostro sito web

#### RADIAL AND AXIAL LOADS

##### Output shaft

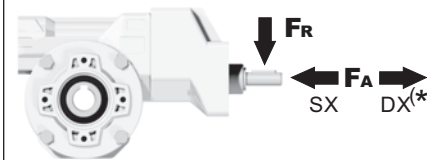
Albero di uscita



$n_2$ [min <sup>-1</sup> ]	$F_A$ [N]	$F_R$ [N]
75	240	1200
50	260	1400
25	300	1800
15-6	400	2000

##### Input shaft

albero in entrata



$n_1$ [min <sup>-1</sup> ]	$F_A$ [N]	$F_R$ [N]
1400	44	220

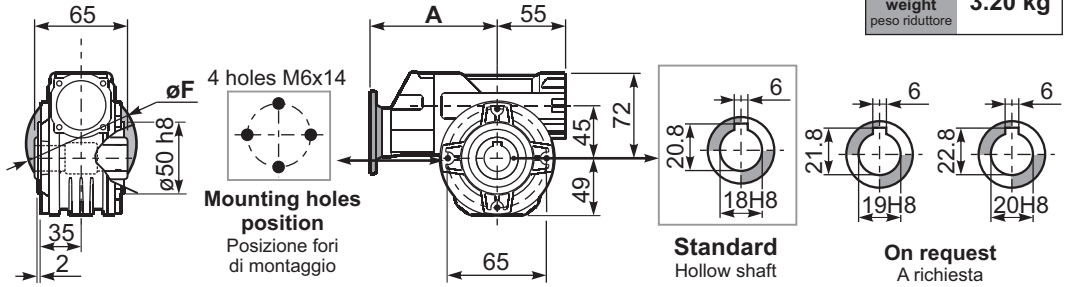
\*Strong axial loads in the DX direction are not allowed.  
Non sono consentiti forti carichi assiali con direzione DX

tab. 2

PP45**FB**... Basic wormbox  
Riduttore base

Gearbox weight  
peso riduttore **3.20 kg**

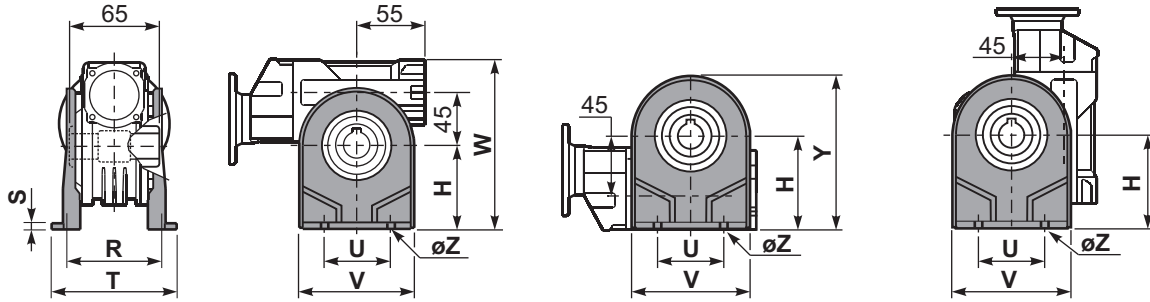
M. flanges	Kit code	øF	A
56B5	K050.4.046	120	137.5
63B5	K050.4.041	138	139.5
71B5	K050.4.042	160	137
63B14	K050.4.047	90	139.5
71B14	K050.4.045	105	137



PP45**PA**... Feet  
Piedini

PP45**PB**... Feet  
Piedini

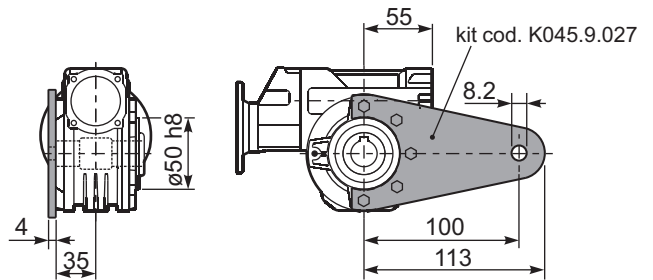
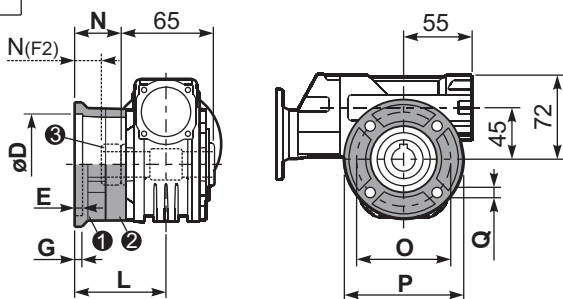
PP45**PV**... Feet  
Piedini



	H	R	S	T	U	V	Y	W	øZ	kit code
type B	72	81	3	100	52	98	121	144	ø10.5	K045.9.022
type S	71	84	8	100	70	90	120	143	ø8	KS045.9.023

PP45**FC**... Output flange  
Flangia uscita

PP45**BR**... Reaction arm  
Braccio di reazione

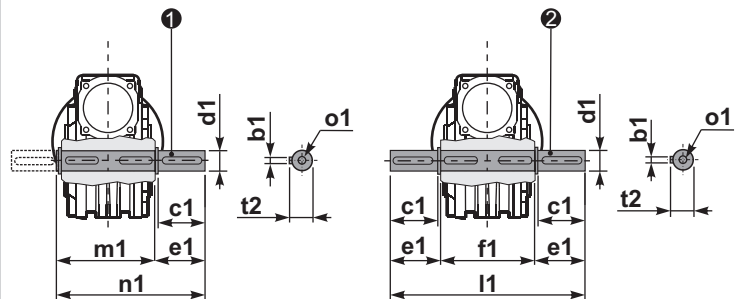


type B	øD	E	G	L	N	O	P	Q	kit code
FC	60 <sup>+0.15</sup> / <sub>+0.05</sub>	9	9	60.5	28	87	110	8.5	① K045.9.010 ② -
FL	60 <sup>+0.15</sup> / <sub>+0.05</sub>	9	9	90.5	58	87	110	8.5	① K045.9.010 ② K045.0.200

PP45.....**S**... Single Shaft  
Albero lento semplice

PP45.....**D**... Double Shaft  
Albero lento bisp.

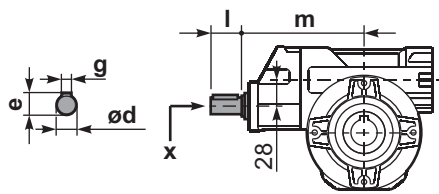
type S	øD	E	G	L	N	O	P	Q	kit code
F1	95 <sup>+0.20</sup> / <sub>+0.15</sub>	4	11	73.5	41	115	140	9	① KS045.9.013 ② -
F2	60 <sup>+0.15</sup> / <sub>+0.05</sub>	9	9	60.5	19	87	110	8.5	① KS045.9.010 ② S045.0.204
F3	80 <sup>+0.03</sup> / <sub>+0.00</sub>	3	8	51.5	19	100	120	9	① KS045.9.014 ② -



① kit cod. K045.5.028 type B  
kit cod. KS045.5.030 type S

② kit cod. K045.5.029 type B

RP45**FB**... Input shaft  
Albero in entrata



	ød	e	g	l	m	x
type B	14 h6	16	5	25	131	M5x13
type S	-	-	-	-	-	-

	b1	c1	d1	e1	f1	l1	m1	n1	t2	o1
type B	6	32	18 <sup>-0.005</sup> / <sub>-0.020</sub>	43	65	151	70	113	20.5	M6x18
type S	6	40	19 <sup>-0.005</sup> / <sub>-0.020</sub>	58.8	-	-	70	128.5	21.5	M8x20