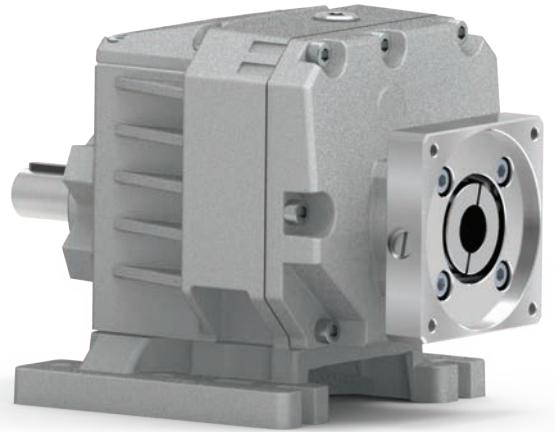
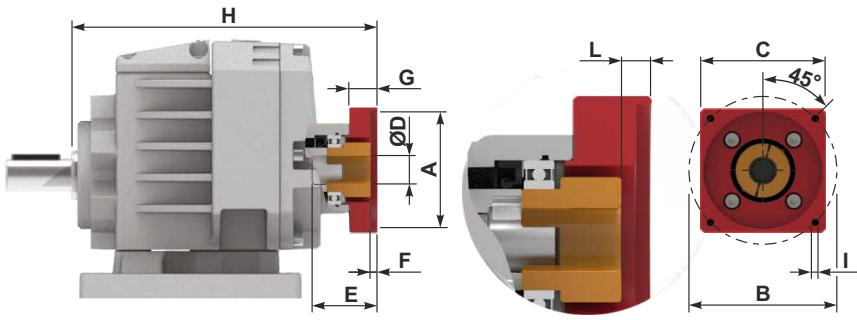


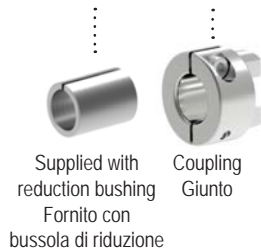
COAXIAL GEARBOXES

Flanges for servomotors - Flange per servomotori

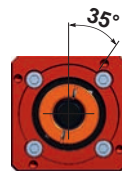
Aluminum Coaxial-Gear



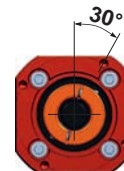
| Type | Catalog Flange Code | Input Flanges Kit Code | Bushing Kit Code | Coupling Kit Code | Motor shaft Ø | A | B | C | ØD | E | F | G | L | I | H | 412A | 513A | 613A |
|----------------------|---------------------|------------------------|------------------|-------------------|---------------|-----|-----|-----|-----|------|-----|----|------|-------|-------|------|------|------|
| 413A 175Nm | BC | K0504072 | KBR11/14G | KC355190L | Ø11 | 60 | 75 | 70 | Ø14 | 38 | 4.5 | 23 | 9 | M5x12 | 190.5 | | | |
| | BC | K0504072 | - | KC355190L | Ø14 | 60 | 75 | 70 | Ø14 | 38 | 4.5 | 23 | 9 | M5x12 | 190.5 | | | |
| | BB | K0504073 | - | KC355190L | Ø14 | 50 | 70 | 70 | Ø14 | 38 | 4.5 | 23 | 9 | M5x12 | 190.5 | | | |
| | BE | K0504074 | - | KC355190L | Ø14 | 80 | 100 | 85 | Ø14 | 38 | 4.5 | 23 | 9 | M6x12 | 190.5 | | | |
| | BB | K0504073 | - | KC355190L | Ø14 | 50 | 70 | 70 | Ø14 | 38 | 4.5 | 23 | 9 | M5x12 | 190.5 | | | |
| | BE | K0504074 | - | KC355190L | Ø14 | 80 | 100 | 85 | Ø14 | 38 | 4.5 | 23 | 9 | M6x12 | 190.5 | | | |
| 412A 175Nm | BC | K0634072 | KBR14/22G | KC405190L | Ø14 | 60 | 75 | 90 | Ø22 | 55.5 | 4.5 | 25 | 9 | M5x12 | 186.5 | 243 | 260 | |
| | BB | K0634073 | KBR14/22G | KC405190L | Ø14 | 50 | 70 | 80 | Ø22 | 55.5 | 4.5 | 25 | 9 | M5x12 | 186.5 | 243 | 260 | |
| 513A 360Nm | BE | K0634074 | KBR14/22G | KC405190L | Ø14 | 80 | 100 | 85 | Ø22 | 55.5 | 4.5 | 25 | 9 | M6x12 | 186.5 | 243 | 260 | |
| | BF | K0634075 | KBR19/22G | KC405190L | Ø19 | 95 | 115 | 100 | Ø22 | 55.5 | 4.5 | 25 | 9 | M8x12 | 186.5 | 243 | 260 | |
| 613A 530Nm | BG | K0634076 | - | KC405190L | Ø22 | 110 | 145 | 130 | Ø22 | 60.5 | 8 | 30 | 14 | M8x14 | 191.5 | 248 | 265 | |
| | BD | K0634078 | KBR19/22G | KC405190L | Ø19 | 70 | 90 | 90 | Ø22 | 55.5 | 4.5 | 25 | 9 | M6x12 | 186.5 | 243 | 260 | |
| 512A 360Nm | BF | K0854075 | KBR19/24G | KC505190L | Ø19 | 95 | 115 | 100 | Ø24 | 58 | 4.5 | 26 | 9.5 | M8x14 | 235.5 | 252 | | |
| | BG | K0854076 | KBR22/24G | KC505190L | Ø22 | 110 | 145 | 130 | Ø24 | 62 | 8 | 30 | 13.5 | M8x14 | 239.5 | 256 | | |
| 612A 530Nm | BH | K0854077 | - | KC505190L | Ø24 | 130 | 165 | 140 | Ø24 | 58 | 5 | 26 | 9.5 | M8x14 | 235.5 | 252 | | |
| | BD | K0854078 | KBR19/24G | KC505190L | Ø19 | 70 | 90 | 95 | Ø24 | 58 | 4.5 | 26 | 9.5 | M6x14 | 235.5 | 252 | | |



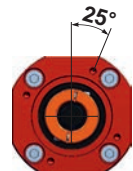
Flanges for servomotors
Flange per servomotori



K0504072
Fixing holes shifted by 35°
Fori fissaggio motore ruotati a 35°



K0504073
K0634078
Fixing holes shifted by 30°
Fori fissaggio motore ruotati a 30°



K0634072
K0634073
Fixing holes shifted by 25°
Fori fissaggio motore ruotati a 25°