



QUICK SELECTION / Selezione veloce

input speed (n_1) = 1400 min⁻¹

| Output Speed n_2 [min ⁻¹] | Ratio i | Motor power P_{1M} [kW] | Output torque M_{2M} [Nm] | Service factor f.s. | Nominal power P_{1R} [kW] | Nominal torque M_{2R} [Nm] | Available B5 motor flanges | | | | Available B14 motor flanges | | | Output Shaft | Ratios code | |
|---|--------------|---------------------------------|-----------------------------------|------------------------|-----------------------------------|------------------------------------|----------------------------|----|----|----|-----------------------------|----|----|------------------|---|----|
| | | | | | | | -B | -C | -D | -E | -Q | -R | -T | | | |
| | | | | | | | 63 | 71 | 80 | 90 | 71 | 80 | 90 | | | |
| 891 | 1.57 | 1.5 | 16 | 1.3 | 1.9 | 20 | B | | | | C | C | | 2844 | standard ø19 On request ø14 ø24 | 01 |
| 493 | 2.84 | 1.5 | 28 | 1.2 | 1.8 | 35 | B | | | | C | C | | 1954 | | 02 |
| 425 | 3.29 | 1.5 | 33 | 1.2 | 1.7 | 38 | B | | | | C | C | | 1756 | | 03 |
| 362 | 3.87 | 1.5 | 39 | 1.0 | 1.5 | 40 | B | | | | C | C | | 1558 | | 04 |
| 303 | 4.62 | 1.5 | 46 | 1.0 | 1.5 | 47 | B | | | | C | C | | 1360 | | 05 |
| 222 | 6.30 | 1.1 | 46 | 1.0 | 1.1 | 46 | B | | | | C | C | | 1063 | | 06 |
| 170 | 8.22 | 0.55 | 30 | 1.3 | 0.69 | 38 | B | | | | C | C | | 974 | | 07 |
| 129 | 10.86 | 0.37 | 27 | 1.0 | 0.39 | 28 | B | | | | C | C | | 776 | | 08 |

The dynamic efficiency is **0.98** for all ratios

Motor Flanges Available
Flange Motore Disponibili

B) Supplied with Reduction Bushing
Fornito con Bussola di Riduzione

B) Available on Request without reduction bushing
Disponibile a Richiesta senza Bussola di Riduzione

C) Motor Flange Holes Position
Posizione Fori Flangia Motore

4

EN Unit **411A** is supplied with synthetic oil for lifetime lubrication, no maintenance is necessary. See table 1 for lubrication and recommended quantity. In table 2 please see possible radial loads and axial loads on the gearbox.

I Il riduttore **411A** viene fornito completo di olio sintetico per la lubrificazione permanente e non necessita di alcuna manutenzione. Vedi tab.1 per oli e quantità consigliati. In tab.2 sono presenti i carichi radiali e assiali applicabili al riduttore.

D Das Getriebe **411A** ist mit synthetischem Öl gefüllt und ist lebensdauergeschmiert. In Tabelle 1 ist die Schmiermenge und das empfohlene Schmiermittel angegeben. In Tabelle 2 sind die zulässigen Radial - und Axialbelastungen des Getriebes aufgeführt.

F Le réducteur **411A** est fourni complet avec de l'huile synthétique pour la lubrification permanente et ne nécessite aucun entretien. Voir tableau 1 concernant les huiles et les quantités conseillées. Les charges radiales et axiales applicables au réducteur sont précisées dans le tableau 2.

E El reductor tamaño **411A** se suministra, lubricado de por vida con aceite sintético y no requieren mantenimiento alguna. Ver tabla 1, para cantidades y aceites recomendados. En la tabla 2, se encuentran las cargas radiales y axiales admitidas por el reductor.

LUBRICATION 411A Oil Quantity 0.10 Lt.

SHELL Omala S4 WE 320

ENI Telium VSF 320

For all details on lubrication and plugs check our website

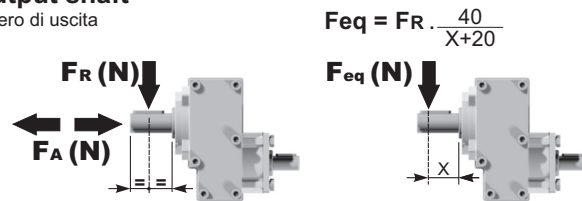
tab. 1

Per maggiori dettagli su lubrificazione e tappi olio vedi il nostro sito web

RADIAL AND AXIAL LOADS

Output shaft

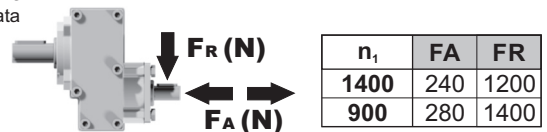
Albero di uscita



| n_2 | FA | FR | n_2 | FA | FR | n_2 | FA | FR |
|-------|-----|------|-------|-----|------|-------|-----|------|
| 700 | 182 | 910 | 400 | 230 | 1150 | 200 | 290 | 1450 |
| 600 | 200 | 1000 | 300 | 250 | 1250 | 140 | 320 | 1600 |

Input shaft

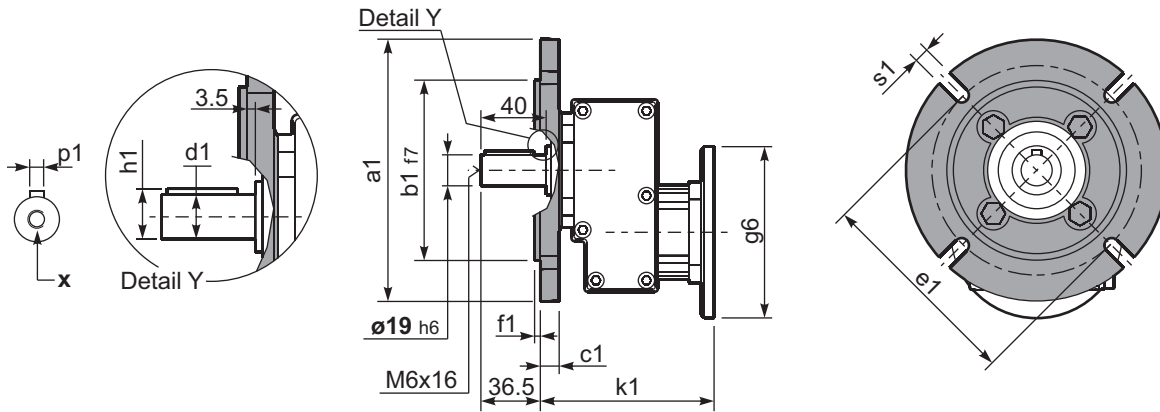
Albero in entrata



tab. 2

P411-F... Output flange
flange di uscita

Gearbox weight
peso riduttore **3.20 kg**



***Available output shaft / Alberi di uscita**

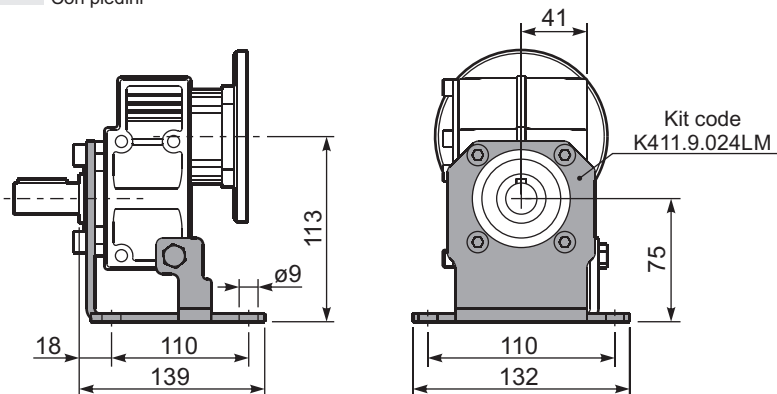
| | Shaft - d1 | p1 | h1 | x |
|---------------------------|--------------------|--------|----------|----------------|
| Standard | ø 19x40 | 6 | 21.5 | M6x16 |
| On request A richiesta | ø 14x30 ø 24x40 | 5 8 | 16 27 | M5x13 M6x16 |

Available output flanges / flange di uscita

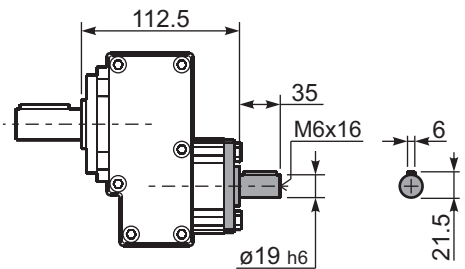
| a1 ø | b1 | c1 | e1 | f1 | s1 | kit code |
|------|-----|------|-----|-----|----|------------|
| 120 | 80 | 11.5 | 100 | 3 | 9* | KC30.9.010 |
| 140 | 95 | 11.5 | 115 | 3 | 9 | KC30.9.011 |
| 160 | 110 | 11.5 | 130 | 3.5 | 9 | KC30.9.012 |
| 200 | 130 | 11.5 | 165 | 3.5 | 11 | KC30.9.013 |

*Holes position
posizione fori

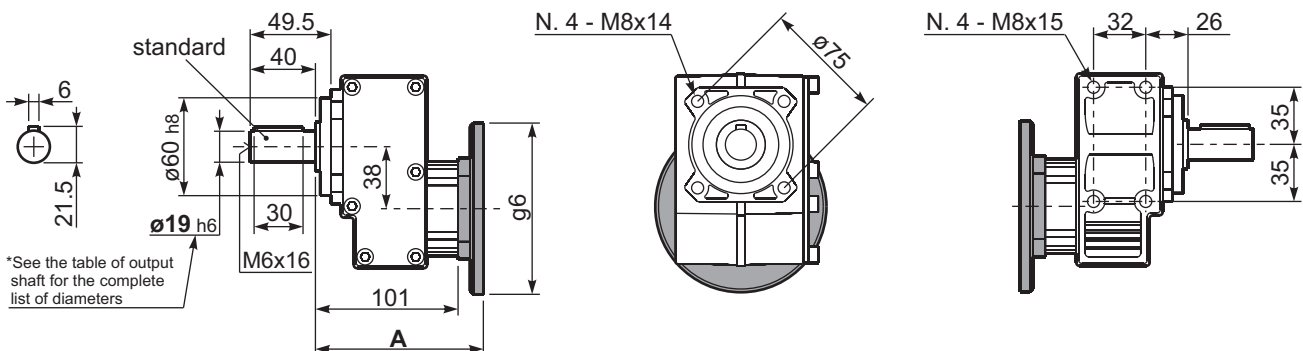
P411-H1... With feet
Con piedini



R411-N... Input Shaft
Albero in entrata



P411-N... Basic gearbox
Riduttore base



*See the table of output shaft for the complete list of diameters

| B5 Motor Flanges | A | g6 | k1 | kit code |
|------------------|-------|-----|-----|------------|
| 63 B5 | 121.5 | 140 | 125 | K063.4.041 |
| 71 B5 | 119.5 | 160 | 123 | K063.4.042 |
| 80/90 B5 | 121.5 | 200 | 125 | K063.4.043 |

| B14 Motor Flanges | A | g6 | k1 | kit code |
|-------------------|-------|-----|-----|------------|
| 71 B14 | 119.5 | 105 | 123 | K063.4.047 |
| 80 B14 | 121.5 | 120 | 125 | K063.4.046 |
| 90 B14 | 121.5 | 140 | 125 | K063.4.041 |