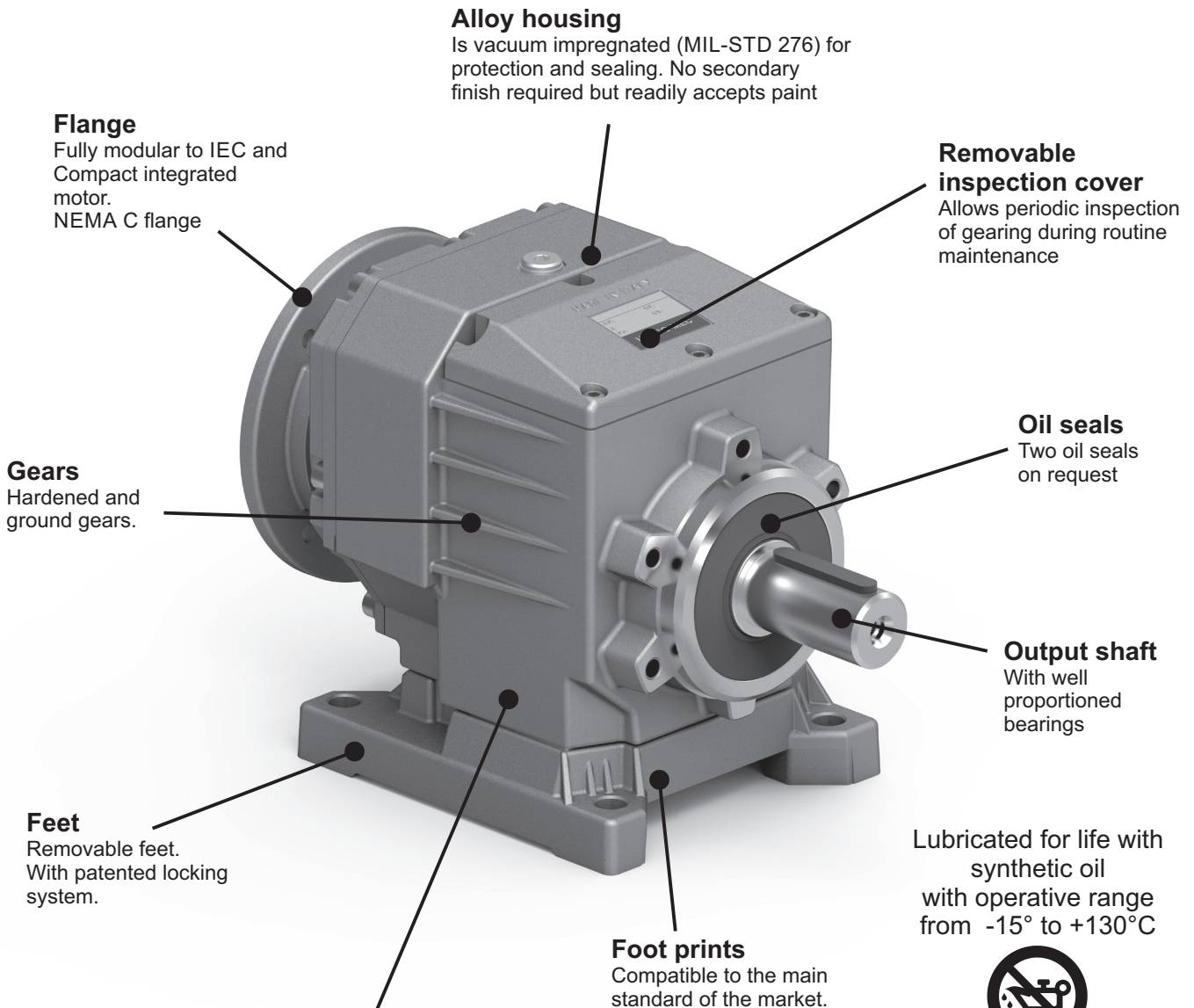


Aluminum in line gearboxes

A modular and compact product



Flange
Fully modular to IEC and Compact integrated motor.
NEMA C flange

Alloy housing
Is vacuum impregnated (MIL-STD 276) for protection and sealing. No secondary finish required but readily accepts paint

Removable inspection cover
Allows periodic inspection of gearing during routine maintenance

Gears
Hardened and ground gears.

Oil seals
Two oil seals on request

Output shaft
With well proportioned bearings

Feet
Removable feet. With patented locking system.

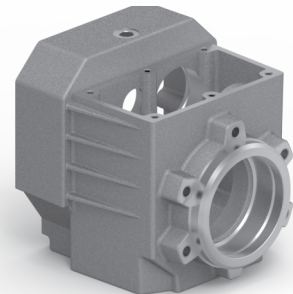
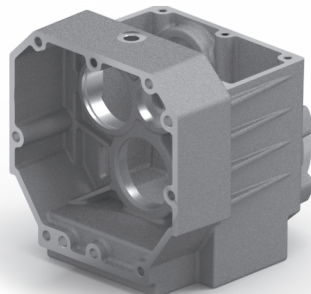
Foot prints
Compatible to the main standard of the market.

Lubricated for life with synthetic oil with operative range from -15° to +130°C



Single-piece aluminum alloy housing

Combines light weight with high tensile strength. Precision machined for alignment of bearings and gearing



World wide sales network.