



#### QUICK SELECTION / Selezione veloce

input speed ( $n_1$ ) = 1400 min<sup>-1</sup>

Output Speed $n_2$ [min <sup>-1</sup> ]	Ratio $i$	Motor power $P_{1M}$ [kW]	Output torque $M_{2M}$ [Nm]	Service factor f.s.	Nominal power $P_{1R}$ [kW]	Nominal torque $M_{2R}$ [Nm]	Available B5 motor flanges				Available B14 motor flanges			Dynamic efficiency RD	Tooth Module [mm]	Ratios code	
							-C	-D	-E	-F	-R	-T	-U				
							71	80	90	100 112	80	90	100 112				
200	7	4.0	168	1.6	6.4	270		B	B			B	B		88	4.23	01
140	10	4.0	218	1.4	5.5	298		B	B			B	B		80	4.2	02
100	14	4.0	298	1.1	4.3	320		B	B			B	B		78	4.5	03
70	20	3.0	323	1.0	2.9	309		B	B			B	B		79	3.4	04
64	22	2.2	258	1.2	2.6	309		B	B			B	B		78	3.1	05
50	28	2.2	315	1.2	2.5	364		B	B	B		B	B		75	4.7	06
37	38	1.5	276	1.3	1.9	353	B	B				B			71	3.5	07
30	46	1.5	320	1.1	1.6	342	B	B				B			68	3.1	08
27	52	1.1	258	1.2	1.3	303	B	B				B			66	2.7	09
21	67	1.1	327	0.9	1.02	303	B	B				B			65	2.1	10
18.9	74	0.75	220	1.3	0.96	281	B	B				B			58	1.9	11
14.6	96	0.55	191	1.3	0.73	254	B	B				B			53	1.5	12

**A** Motor Flanges Available  
Flange Motore Disponibili

**B** Supplied with Reduction Bushing  
Fornito con Bussola di Riduzione

**B** Available on Request without reduction bushing  
Disponibile a Richiesta senza Bussola di Riduzione

**C** Motor Flange Holes Position  
Posizione Fori Flangia Motore

**EN** Unit M85 is supplied with synthetic oil, providing "long life" lubrication. For mounting position V5-V6 please contact us. See table 1 for lubrication and recommended quantity. In table 2 please see possible radial loads and axial loads on the gearbox.

**I** Il riduttore tipo M85 viene fornito lubrificato a vita con olio sintetico. Per posizioni V5-V6 contattare il ns. servizio tecnico. Vedi tab.1 per oli e quantità consigliati. In tab.2 sono presenti i carichi radiali e assiali applicabili al riduttore.

**D** Für die Lebensdauerschmierung ist das Getriebe der Größe M85 mit synthetischem Öl befüllt. Bei Einbaulage V5 oder V6 bitten wir um Rücksprache. In Tabelle 1 ist die Schmiermenge und das empfohlene Schmiermittel angegeben. In Tabelle 2 sind die zulässigen Radial- und Axialbelastungen des Getriebes aufgeführt.

**F** Le réducteur de type M85 est fourni lubrifié à vie avec de l'huile synthétique. Concernant les positions V5.V6, contactez notre service d'assistance technique. Voir tableau 1 concernant les huiles et les quantités conseillées. Les charges radiales et axiales applicables au réducteur sont précisées dans le tableau 2.

**E** El reductor tamaño M85 se suministra, lubricado de por vida con aceite sintético. Para las posiciones V5 y V6 contactar con nuestro servicio técnico. Ver tabla 1, para cantidades y aceites recomendados. En la tabla 2, se encuentran las cargas radiales y axiales admitidas por el reductor.

#### LUBRICATION M85 Oil Quantity 1.20 Lt.

**SHELL** Omala S4 WE 320

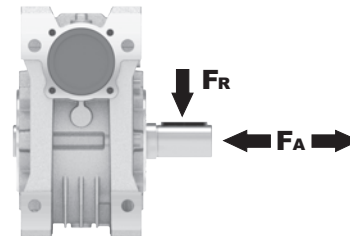
**ENI** Telium VSF 320

For all details on lubrication and plugs check our website **tab. 1**  
Per maggiori dettagli su lubrificazione e tappi olio vedi il nostro sito web

#### RADIAL AND AXIAL LOADS

##### Output shaft

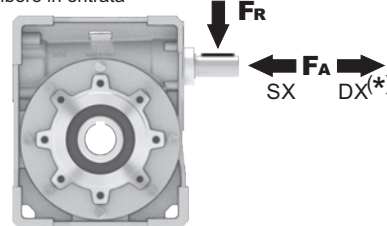
Albero di uscita



$n_2$ [min <sup>-1</sup> ]	FA [N]	FR [N]
200	500	2500
150	580	2900
100	600	3000
75	700	3500
50	800	4000
25	1000	5000
15	1160	5800

##### Input shaft

albero in entrata



$n_1$ [min <sup>-1</sup> ]	FA [N]	FR [N]
1400	130	650

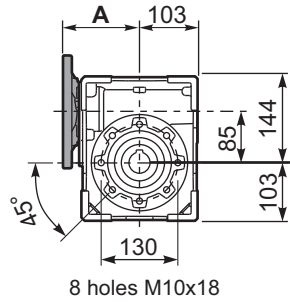
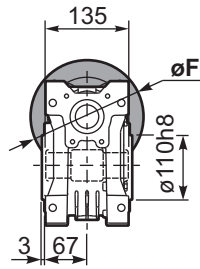
\*Strong axial loads in the DX direction are not allowed.  
Non sono consentiti forti carichi assiali con direzione DX

tab. 2

# M Square - Gear 364Nm **M85**

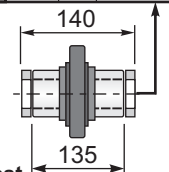
## PM85FB... Basic wormbox Riduttore base

M. flanges	Kit code	øF	A
<b>71B5</b>	K023.4.041	160	116.5
<b>80/90B5</b>	K023.4.042	200	118.5
<b>100/112B5</b>	K023.4.043	250	127.5
<b>80B14</b>	K085.4.046	120	118.5
<b>90B14</b>	K085.4.045	140	118.5
<b>100/112B14</b>	K085.4.047	160	127.5



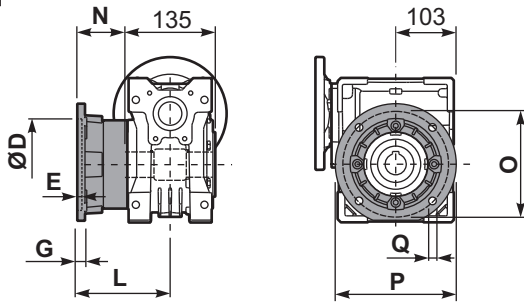
Gearbox weight  
peso riduttore **12.1 kg**

ø H8	B	C	*Spacer code
<b>35</b> Standard	38.3	10	KM85.3.035
<b>38</b> on request	41.3	10	KM85.3.038



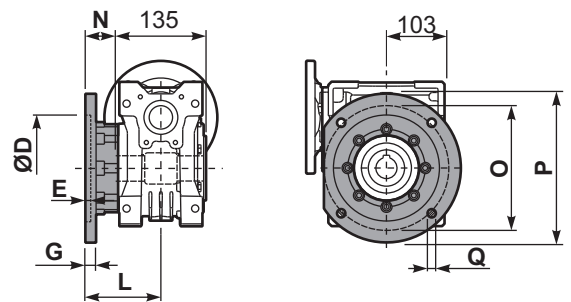
\*On Request  
output shaft with spacers

## PM85FC... Output flange Flangia uscita



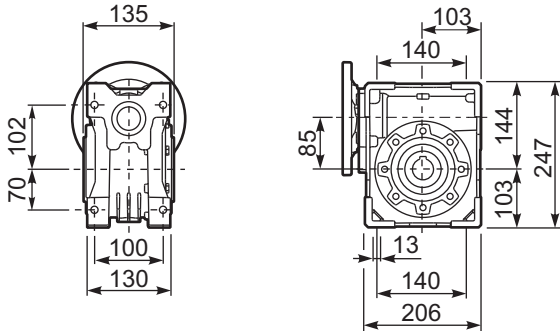
type B	øD	E	G	L	N	O	P	Q	kit code
<b>FC</b>	152 H8	5	16	111	43.5	176	205	13	K085.9.010
<b>FL</b>	180 H8	6	18	122	54.5	215	250	14	KM85.9.011

## PM85F1... Output flange Flangia uscita

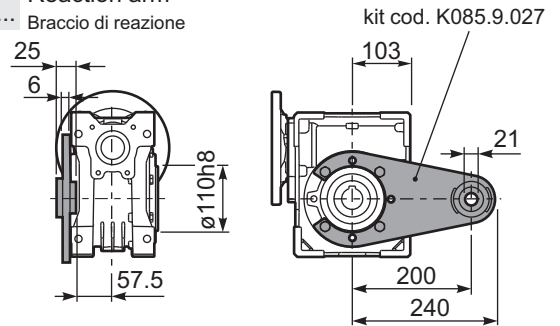


type S	øD	E	G	L	N	O	P	Q	kit code
<b>F1</b>	130 H8	5	13	109.5	42	165	200	13	KS085.9.015
<b>F2</b>	152 H8	5	16	151.5	84	176	205	13	K085.9.010 K085.0.201

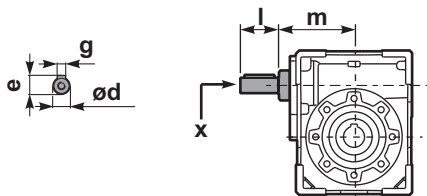
## PM85FB... Feet Piedini



## PM85BR... Reaction arm Braccio di reazione

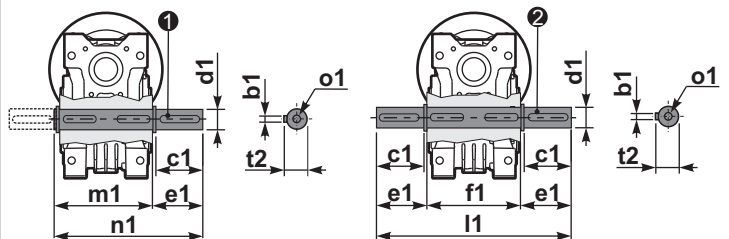


## RM85FB... Input shaft Albero in entrata



## PM85...S... Single Shaft Albero lento semplice

## PM85...D... Double Shaft Albero lento bisp.



① kit cod. K085.5.028 type B

② kit cod. K085.5.029 type B

	ød	e	g	l	m	x	kit code
type B	25 h6	28	8	50	112	M8x20	① K085.5.007 PAM90 ② K085.5.008 PAM100
type S	24 h6	27	8	50	112	M8x20	① KS085.5.009 PAM90 ② KS085.5.011 PAM100

	b1	c1	d1	e1	f1	l1	m1	n1	t2	o1
type B	10	60	35 <sup>-0.005</sup> <sub>-0.020</sub>	73.5	135	282	141	214.5	38	M10x23
type S	-	-	-	-	-	-	-	-	-	-