

#### QUICK SELECTION / Selezione veloce

input speed ( $n_1$ ) = 1400 min<sup>-1</sup>

Output Speed $n_2$ [min <sup>-1</sup> ]	Ratio $i$	Motor power $P_{1M}$ [kW]	Output torque $M_{2M}$ [Nm]	Service factor f.s.	Nominal power $P_{1R}$ [kW]	Nominal torque $M_{2R}$ [Nm]	Available B5 motor flanges				Available B14 motor flanges			Dynamic efficiency <b>RD</b>	Tooth Module  [mm]	Ratios code 
							-B	-C	-D	-E	-Q	-R	-T			
							63	71	80	90	71	80	90			
23.5	<b>59.7</b>	1.1	300	1.4	<b>1.5</b>	<b>418</b>					C	C		67	3.5	01
19.4	<b>72.3</b>	1.1	347	1.2	<b>1.3</b>	<b>407</b>					C	C		64	3.1	02
17.1	<b>81.7</b>	1.1	374	1.1	<b>1.2</b>	<b>418</b>					C	C		61	2.7	03
13.3	<b>105</b>	0.75	323	1.2	<b>0.89</b>	<b>385</b>					C	C		60	2.1	04
8.0	<b>176</b>	0.55	415	1.1	<b>0.58</b>	<b>440</b>	B				C	C		63	3.5	05
6.6	<b>213</b>	0.37	322	1.3	<b>0.47</b>	<b>407</b>	B				C	C		60	3.1	06
5.8	<b>240</b>	0.37	321	1.3	<b>0.48</b>	<b>418</b>	B				C	C		53	2.7	07
4.3	<b>328</b>	0.37	438	1.0	<b>0.35</b>	<b>418</b>	B				C	C		53	2.7	08
3.3	<b>422</b>	0.25	374	1.0	<b>0.26</b>	<b>385</b>	B				C	C		52	2.1	09
3.0	<b>466</b>	0.25	358	0.9	<b>0.23</b>	<b>330</b>	B				C	C		45	1.9	10
2.3	<b>605</b>	0.18	297	1.1	<b>0.20</b>	<b>330</b>	B				C	C		40	1.5	11

**Motor Flanges Available**  
Flange Motore Disponibili

**B) Supplied with Reduction Bushing**  
Fornito con Bussola di Riduzione

**B) Available on Request without reduction bushing**  
Disponibile a Richiesta senza Bussola di Riduzione

**C) Motor Flange Holes Position**  
Posizione Fori Flangia Motore

**EN** Unit **P8M** is supplied with synthetic oil, providing "long life" lubrication. For mounting position V5-V6 please contact us. See table 1 for lubrication and recommended quantity. In table 2 please see possible radial loads and axial loads on the gearbox.

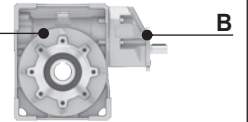
**I** Il riduttore tipo **P8M** viene fornito lubrificato a vita con olio sintetico. Per posizioni V5-V6 contattare il ns. servizio tecnico. Vedi tab.1 per oli e quantità consigliati. In tab.2 sono presenti i carichi radiali e assiali applicabili al riduttore.

**D** Für die Lebensdauerschmierung ist das Getriebe der Größe **P8M** mit synthetischem Öl befüllt. Bei Einbaulage V5 oder V6 bitten wir um Rücksprache. In Tabelle 1 ist die Schmiermenge und das empfohlene Schmiermittel angegeben. In Tabelle 2 sind die zulässigen Radial- und Axialbelastungen des Getriebes aufgeführt.

**F** Le réducteur de type **P8M** est fourni lubrifié à vie avec de l'huile synthétique. Concernant les positions V5.V6, contactez notre service d'assistance technique. Voir tableau 1 concernant les huiles et les quantités conseillées. Les charges radiales et axiales applicables au réducteur sont précisées dans le tableau 2.

**E** El reductor tamaño **P8M** se suministra, lubricado de por vida con aceite sintético. Para las posiciones V5 y V6 contactar con nuestro servicio técnico. Ver tabla 1, para cantidades y aceites recomendados. En la tabla 2, se encuentran las cargas radiales y axiales admitidas por el reductor.

**LUBRICATION P8M Oil**  
For B3-V5-V6 separate lubrication for A ( 1.20 l ) B ( 0.14 l ) , for B6-B7-B8 common lubrication 1.00 l ( A + B ).



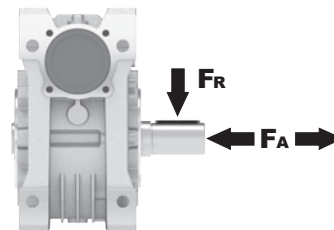
**SHELL** Omala S4 WE 320

**ENI** Telium VSF 320

For all details on lubrication and plugs check our website **tab. 1**  
Per maggiori dettagli su lubrificazione e tappi olio vedi il nostro sito web

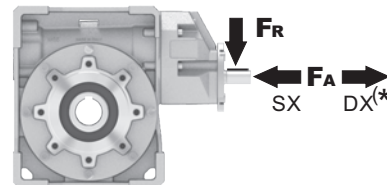
#### RADIAL AND AXIAL LOADS

**Output shaft**  
Albero di uscita



$n_2$ [min <sup>-1</sup> ]	FA [N]	FR [N]
75	700	3500
50	800	4000
25	1000	5000
15-6	1160	5800

**Input shaft**  
albero in entrata



$n_1$ [min <sup>-1</sup> ]	FA [N]	FR [N]
1400	108	540

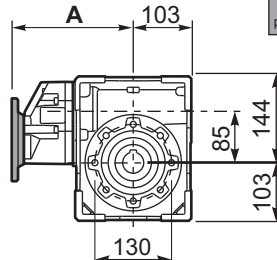
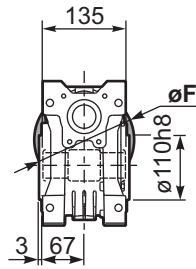
\*Strong axial loads in the DX direction are not allowed.  
Non sono consentiti forti carichi assiali con direzione DX

tab. 2

# M Square - Gear 440Nm **P8M**

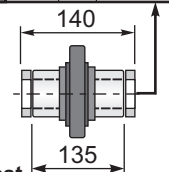
## PP8MFB... Basic wormbox Riduttore base

M. flanges	Kit code	øF	A
63B5	K063.4.041	140	195.2
71B5	K063.4.042	160	193.2
80/90B5	K063.4.043	200	195.2
71B14	K063.4.047	105	193.2
80B14	K063.4.046	120	195.2
90B14	K063.4.041	140	195.2



Gearbox weight  
peso riduttore **12.3 kg**

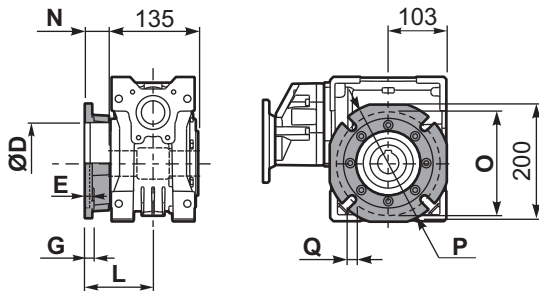
ø H8	B	C	*Spacer code
35 Standard	38.3	10	KM85.3.035
38 on request	41.3	10	KM85.3.038



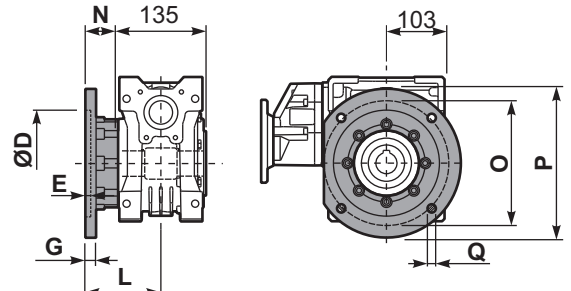
8 holes M10x18

\*On Request  
output shaft with spacers

## PP8MFC... Output flange Flangia uscita



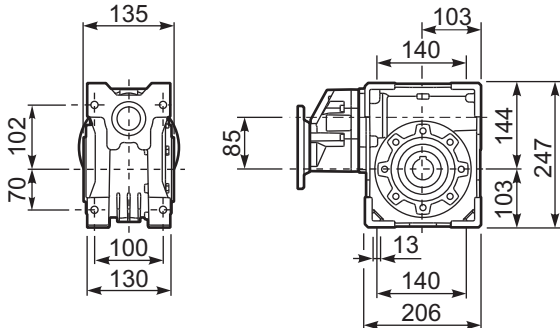
## PP8MF1... Output flange Flangia uscita



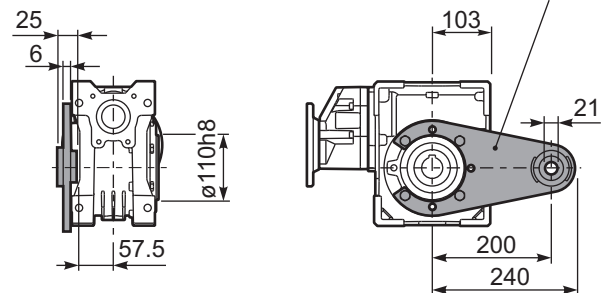
type B	øD	E	G	L	N	O	P	Q	kit code
FC	152 H8	5	16	111	43.5	176	205	13	K085.9.010
FL	180 H8	6	18	122	54.5	215	250	14	KM85.9.011

type S	øD	E	G	L	N	O	P	Q	kit code
F1	130 H8	5	13	109.5	42	165	200	13	KS085.9.015
F2	152 H8	5	16	151.5	84	176	205	13	K085.9.010 K085.0.201

## PP8MFB... Feet Piedini

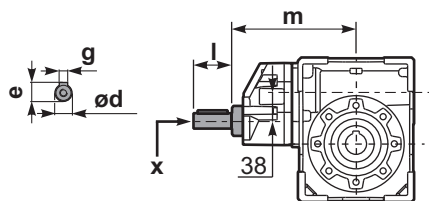


## PP8MBR... Reaction arm Braccio di reazione

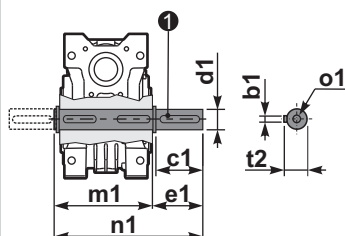


kit cod. K085.9.027

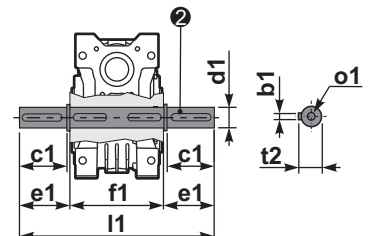
## RP8MFB... Input shaft Albero in entrata



## PP8M...S... Single Shaft Albero lento semplice



## PP8M...D... Double Shaft Albero lento bisp.



① kit cod. K085.5.028 type B

② kit cod. K085.5.029 type B

	ød	e	g	l	m	x	
type B	19 h6	21.5	6	35	186	M6x16	C40.5.062
type S	-	-	-	-	-	-	-

	b1	c1	d1	e1	f1	l1	m1	n1	t2	o1
type B	10	60	35 <sup>-0.005</sup> <sub>-0.020</sub>	73.5	135	282	141	214.5	38	M10x23
type S	-	-	-	-	-	-	-	-	-	-