

QUICK SELECTION / Selezione veloce

input speed (n_1) = 1400 min⁻¹

Output Speed n_2 [min ⁻¹]	Ratio i	Motor power P_{1M} [kW]	Output torque M_{2M} [Nm]	Service factor f.s.	Nominal power P_{1R} [kW]	Nominal torque M_{2R} [Nm]	Available B5 motor flanges		Available B14 motor flanges			Dynamic efficiency RD	Tooth Module $[mm]$	Ratios code
							-B	-C	-O	-P	-Q			
							63	71	56	63	71			
5	280	0.37	403	1.0	0.39	420	B		B-C	B-C		57	3.10	01
3.5	400	0.25	314	1.3	0.33	420	B		B-C	B-C		46	3.10	02
2.5	560	0.25	420	1.0	0.25	420	B		B-C	B-C		44	3.10	03
1.7	840	0.18	423	1.0	0.18	420	B		B-C	B-C		41	3.10	04
1.3	1120	0.12	339	1.2	0.15	420	B		B-C	B-C		37	3.10	05
0.9	1480	0.09	336	1.2	0.11	420	B		B-C	B-C		37	3.10	06
0.8	1840	0.09	373	1.1	0.10	420	B		B-C	B-C		33	3.10	07
0.6	2400	0.09	413	1.0	0.09	420	B		B-C	B-C		28	3.10	08
0.5	2800	0.06	298	1.4	0.08	420	B		B-C	B-C		26	3.10	09
0.3	4080	0.06	250	1.4	0.09	359	B		B-C	B-C		15	3.10	10

A Motor Flanges Available
Flange Motore Disponibili

B Supplied with Reduction Bushing
Fornito con Bussola di Riduzione

B Available on Request without reduction bushing
Disponibile a Richiesta senza Bussola di Riduzione

C Motor Flange Holes Position
Posizione Fori Flangia Motore

EN Unit **74M** is supplied with synthetic oil, providing "long life" lubrication. For mounting position V5-V6 please contact us. See table 1 for lubrication and recommended quantity. In table 2 please see possible radial loads and axial loads on the gearbox.

I Il riduttore tipo **74M** viene fornito lubrificato a vita con olio sintetico. Per posizioni V5-V6 contattare il ns. servizio tecnico. Vedi tab.1 per oli e quantità consigliati. In tab.2 sono presenti i carichi radiali e assiali applicabili al riduttore.

D Für die Lebensdauerschmierung ist das Getriebe der Größe **74M** mit synthetischem Öl befüllt. Bei Einbaulage V5 oder V6 bitten wir um Rücksprache. In Tabelle 1 ist die Schmiermenge und das empfohlene Schmiermittel angegeben. In Tabelle 2 sind die zulässigen Radial- und Axialbelastungen des Getriebes aufgeführt.

F Le réducteur de type **74M** est fourni lubrifié à vie avec de l'huile synthétique. Concernant les positions V5.V6, contactez notre service d'assistance technique. Voir tableau 1 concernant les huiles et les quantités conseillées. Les charges radiales et axiales applicables au réducteur sont précisées dans le tableau 2.

E El reductor tamaño **74M** se suministra, lubricado de por vida con aceite sintético. Para las posiciones V5 y V6 contactar con nuestro servicio técnico. Ver tabla 1, para cantidades y aceites recomendados. En la tabla 2, se encuentran las cargas radiales y axiales admitidas por el reductor.

LUBRICATION 74M Oil
Quantity 0.40/0.09 Lt.

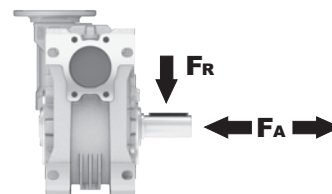
SHELL Omala S4 WE 320

ENI Telium VSF 320

For all details on lubrication and plugs check our website **tab. 1**
Per maggiori dettagli su lubrificazione e tappi olio vedi il nostro sito web

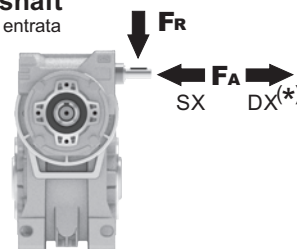
RADIAL AND AXIAL LOADS

Output shaft
Albero di uscita



n_2 [min ⁻¹]	FA [N]	FR [N]
25	880	4400
15	1000	5000

Input shaft
albero in entrata



n_1 [min ⁻¹]	FA [N]	FR [N]
1400	42	210

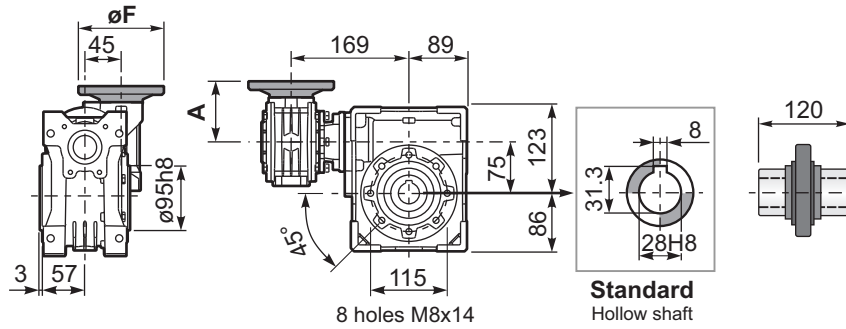
***Strong axial loads in the DX direction are not allowed.**
Non sono consentiti forti carichi assiali con direzione DX

tab. 2

P74MFB... Basic wormbox
Riduttore base

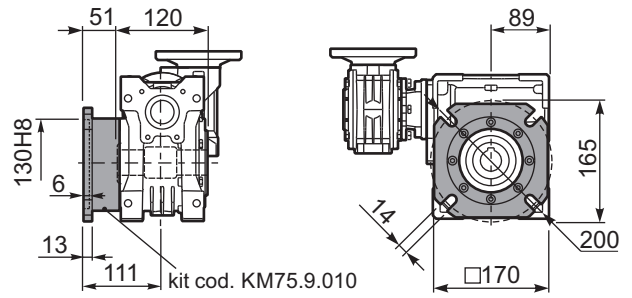
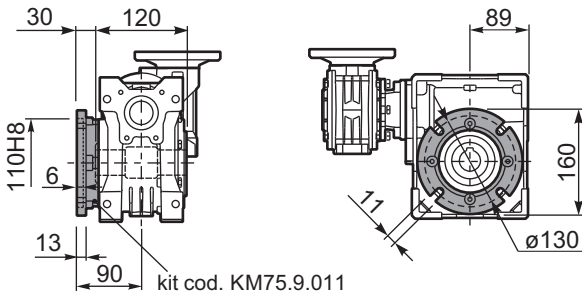
Gearbox weight
peso riduttore **11.4 kg**

M. flanges	Kit code	øF	A
63B5	K050.4.041	138	74
71B5	K050.4.042	160	71.5
56B14	KC40.4.049	80	71.5
63B14	K050.4.047	90	74
71B14	K050.4.045	105	71.5



P74MFC... Round flange
Flangia rotonda

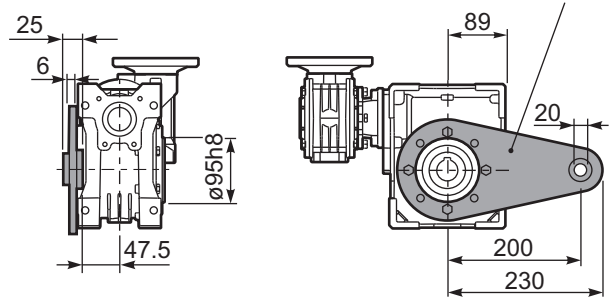
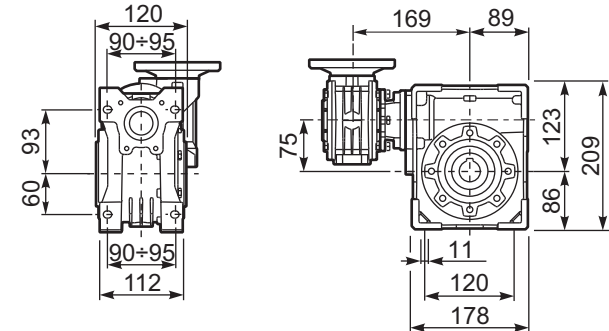
P74MFL... Square flange
Flangia quadrata



P74MFB... Feet
Piedini

P74MBR... Reaction arm
Braccio di reazione

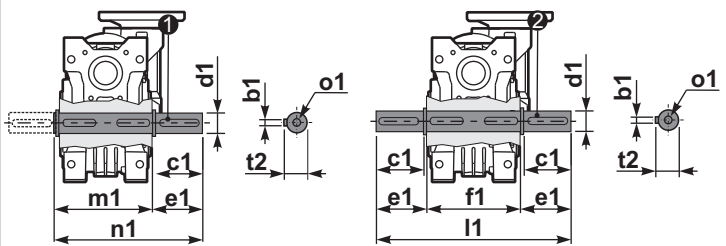
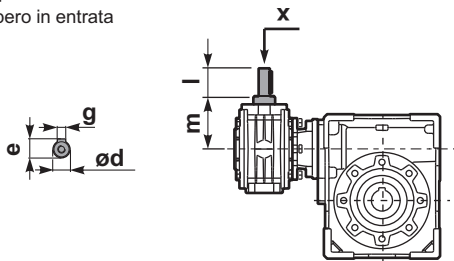
KM75.9.027



R74MFB... Input shaft
Albero in entrata

P74M....S... Single Shaft
Albero lento semplice

P74M....D... Double Shaft
Albero lento bisp.



① kit cod. KM75.5.028 Standard ② kit cod. KM75.5.029 Standard

	ød	e	g	l	m	x	kit code
type B	11 h6	12.5	4	30	68	-	K045.5.006 PAM71

	b1	c1	d1	e1	f1	l1	m1	n1	t2	o1
Standard	8	60	28 h6	63.5	120	247	128.5	192	31	M10
On request	-	-	-	-	-	-	-	-	-	-