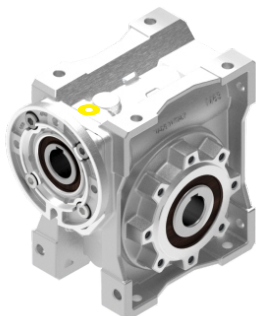




## ATEX Reducer category 2 Riduttore ATEX categoria 2



CODE **AX121**

- Use of synthetic oil and with oil plugs (oil plugs when possible).
- VITON oil seals.
- Loctite on all external screws.
- Double input seals, when possible.
- Additional output oil seals when possible.
- Indication of maximum temperature gauge.
- Utilizzo di olio sintetico e con tappi olio (tappi olio dove è possibile).
- Anelli di tenuta in VITON.
- Frena filetti su tutte le viti fissaggio esterne.
- Doppio anello di tenuta in entrata, dove è possibile.
- Anelli di tenuta supplementare in uscita dove è possibile.
- Indicatore visivo di temperatura di massima.

### Advised / Sugerito



**Atex Cat. 2**

For more information see our guide «Atex installation and maintenance guide» on our website.

Per ulteriori informazioni, consultare la nostra guida «Atex guida alla manutenzione e installazione» sul nostro sito..

## ATEX Reducer category 3 Riduttore ATEX categoria 3

CODE **AX222**

- Use of synthetic oil and with oil plugs (oil plugs when possible).
- Utilizzo di soli olio sintetico e con tappi olio (tappi olio dove è possibile).

### Advised / Sugerito

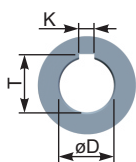
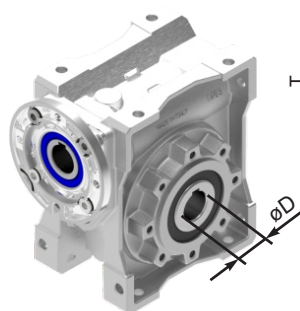


**Atex Cat. 3**

For more information see our guide «Atex installation and maintenance guide» on our website.

Per ulteriori informazioni, consultare la nostra guida «Atex guida alla manutenzione e installazione» sul nostro sito..

## Special stainless steel hollow shaft Mozzo in acciaio inox speciale



CODE **MI0...**

	øD	T	K	CODE
M30	14	16.3	5	MI014
M45	18	20.8	6	MI018
	19	21.8	6	MI019 *
M50	25	28.3	8	MI025
	24	27.3	8	MI024 *
M63	On request			-
M75	On request			-
M85	35	38.3	10	MI035
M11	42	45.3	12	MI042

\* Type S / Tipo S

### Advised / Sugerito

**Food industry, marine, corrosive and highly hygienic environments.**

Industria alimentare, marino, ambienti corrosivi ad elevata igienicità.

## Special hollow shaft Albero uscita speciale

CODE **ACR...**

	øD	T	K	CODE
M45	20	21.8	6	ACR20
	19	21.8	6	«S»Series
M50	24	27.3	8	«S»Series
M63	On request			-
M75	On request			-
M85	38	41.3	10	ACR38
M11	45	48.8	14	ACR45
M13/M15	Not available			-

### Advised / Sugerito

**Many special options are available on request.**

Altre opzioni speciali disponibili a richiesta.



## Special stainless steel hollow shaft NEMA Mozzo in acciaio inox speciale NEMA

CODE **MIU...**

	øD	T	K	CODE
M45	19.05	21.3	4.76	MIU19
	0.750"	0.841"	0.1875"	
M50	25.4	28.3	6.35	MIU25
	1.000"	1.114"	0.250"	
M63	Only on request			-
M85	38.1	42.4	9.52	MIU38
	1.500"	1.670"	0.375"	
M75 / M11 M13 / M15	Not available			-

### Advised / Sugerito

**USA , CANADA, MEXICO.**

# M Square - ACCESSORIES AND OPTIONS



Oil for low temperature and food  
Olio per basse temperature e alimenti



CODE **OB150**

**Agip Blasias 150**  
**Shell Omala**  
Oil for low temperature  
Olio per basse temperature

**Advised / Sugerito**

**Low temperature.**  
**Basse temperature.**



CODE **OF320**

**Mobil SHC Cibus 320**  
Oil for food  
Olio per alimenti

**Oil for food.**  
**Olio per alimenti.**

CODE **OS320**

**Shell Omala 320**  
Synthetic oil only available for Q11, Q13, Q15.  
Olio sintetico disponibile per Q11, Q13, Q15.

**All plugs closed, low internal pressure.**  
**Tappi chiusi, bassa pressione interna.**

NEMA input flange  
Flangia entrata NEMA



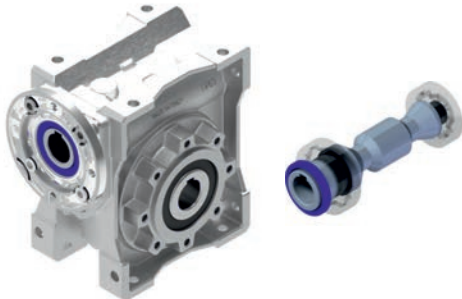
CODE **FLENU**

	W	X	Y
<b>M45</b>	56C-0.625	-	-
<b>M50</b>	56C-0.625	-	-
<b>M63</b>	56C-0.625	143/5TC-0.875	-
<b>M85</b>	56C-0.625	143/5TC-0.875	182/4TC-1.125
<b>M75 / M11</b> <b>M13 / M15</b>	Not available		

**Advised / Sugerito**

**USA , CANADA, MEXICO.**

Input shaft Viton oil seals  
Anelli di tenuta in entrata Viton



CODE **ATVIE**

Type (1pcs)

<b>M30</b>	20x37x06
<b>M45</b>	25x40x7
<b>M50</b>	30x40x7 (1/5=1/30) 25x40x7 (1/36=1/100)
<b>M63</b>	35x47x7
<b>M75</b>	40x68x10
<b>M85 / M11</b>	45x75x10
<b>M13 / M15</b>	Not available

**Advised / Sugerito**

**For ambient temperature >40°C**  
**Per temperatura ambiente >40°C**



Output shaft Viton oil seals  
Anelli di tenuta uscita Viton



CODE **ATVIU**

Type (2pcs)

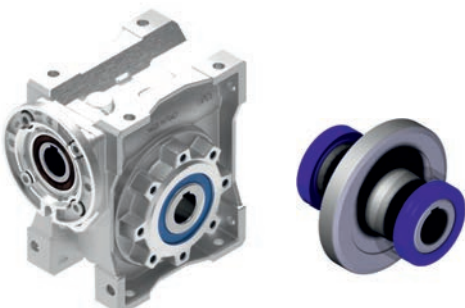
<b>M30</b>	25x40x7 (1pcs) 25x47x7 (1pcs)
<b>M45</b>	30x40x7
<b>M50</b>	40x55x7
<b>M63</b>	45x62x7
<b>M75</b>	50x72x8
<b>M85</b>	55x80x8
<b>M11</b>	65x85x10
<b>M13 / M15</b>	Not available

**Advised / Sugerito**

**For ambient temperature >40°C**  
**Per temperatura ambiente >40°C**



Double output shaft seals  
Doppio anello di tenuta sul mozzo



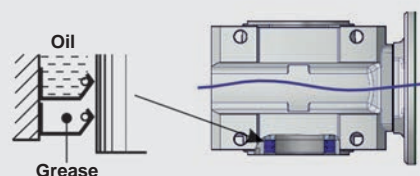
CODE **2ATUS**

Type (2pcs)

<b>M30</b>	
<b>M45</b>	Not available
<b>M50</b>	
<b>M63</b>	45x62x7
<b>M75</b>	Not available
<b>M85</b>	55x80x8
<b>M11</b>	65x85x10
<b>M13 / M15</b>	Not available

**Advised / Sugerito**

**Stronger oil leaks protection.**  
**Protezione con doppio anello di tenuta.**



# M Square - ACCESSORIES AND OPTIONS



Twin Viton seal-shield for IP 69K  
Doppio anello di tenuta Viton armatura AISI 316T



CODE **2ATUV**

Type (2pcs)

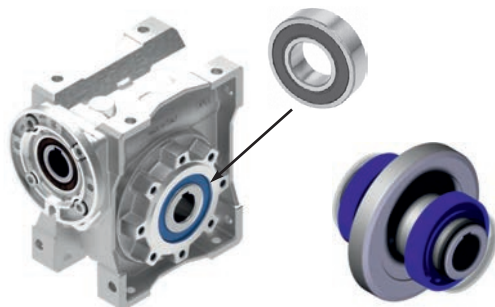
M30	Not available
M45	30x47x10
M50	40x55x10
M63	45x62x14.5
M85	55x80x14.5

Advised / Sugerito

**Food industry , marine, corrosive and highly hygienic environments.**

Industria alimentare, marino, ambienti corrosivi ad elevata igienicità.

Life lubricated bearings  
Cuscinetti lubrificati a vita



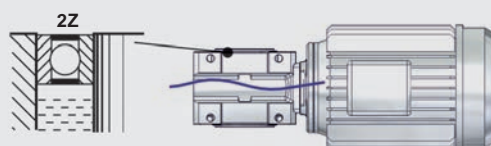
CODE **2CRSU**

Type (2pcs)

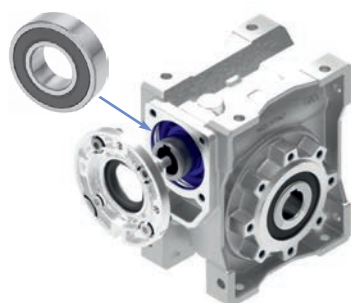
M30	Not available
M45	6006
M50	6008
M63	6009
M75	6010
M85	6011
M11	6013
M13 / M15	Not available

Advised / Sugerito

**Ideal for B6 e B7 position.**  
Ideale per posizione B6 e B7.



Life lubricated bearings  
Cuscinetti lubrificati a vita



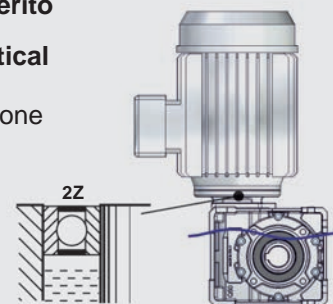
CODE **MONV5**

Type (2pcs)

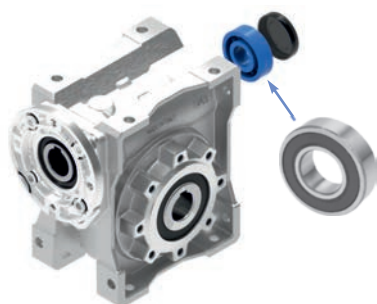
M30	61904
M45	6005
M50	61906 (1/5÷1/30) 6005 (1/36÷1/100)
M63	6007
M75	6008
M85	AV32009
M11	AV32010

Advised / Sugerito

**Ideal for V5 vertical position .**  
Ideale per posizione verticale V5.



Life lubricated bearings  
Cuscinetti lubrificati a vita



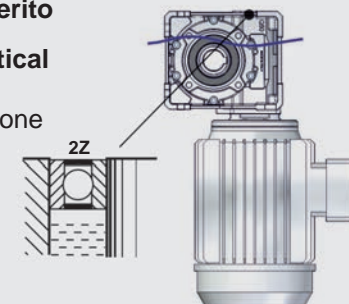
CODE **MONV6**

Type (2pcs)

M30	6201
M45	6202
M50	6204
M63	6204
M75	6205
M85	6306
M11	30206
M13/M15	32207

Advised / Sugerito

**Ideal for V6 vertical position .**  
Ideale per posizione verticale V6.



Protection cup  
Tappo di protezione

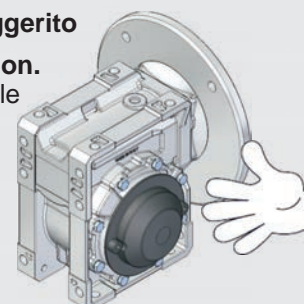


CODE

M30	KM300209
M45	KM450209
M50	KM500209
M63	KM630209
M75	KM750209
M85	K0850209
M11	K11C0209
M13	KM130209
M15	KM130209

Advised / Sugerito

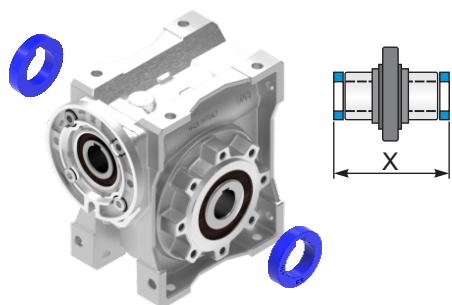
**Hand protection.**  
Protezione delle mani.



# M Square - ACCESSORIES AND OPTIONS



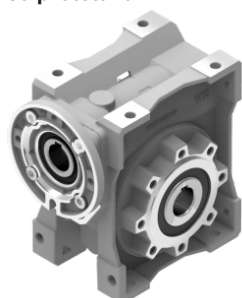
Spacer for dimensions hub  
Distanziale per pacco mozzo



	CODE	X
M30	M303014	63
M45	M453018	78
	M453019	
	M453020	
M50	M503024	92
	M503025	
M85	M853035	140
	M853038	

Advised / Sugerito

Protective paint  
Vernice protettiva



CODE **VEACB**

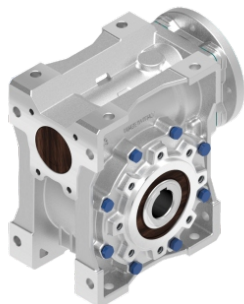
**Color flat WHITE RAL 7035**  
The coating is exceptionally hard, slippery, used where it's required protection against external aggressive and corrosive agents.

**Colore BIANCO opaco RAL 7035**  
il rivestimento risulta eccezionalmente duro, scivoloso, compatto e quindi presenta una fortissima resistenza ad abrasione. Trova il suo utilizzo la dove è necessaria una protezione da agenti esterni aggressivi e corrosivi.

Advised / Sugerito

**Food industry.**  
Industria alimentare.

Stainless steel fastners on FB  
Viti fissaggio FB in acciaio inox



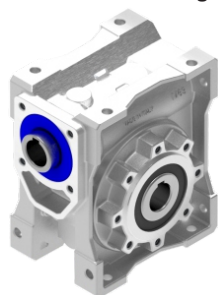
CODE **VCAIX**

M30	Not available
M45	Available
M50	Available
M63	Available
M75	Available
M85	Available
M11	Available

Advised / Sugerito

**Food industry , marine, corrosive and highly hygienic environments.**  
Industria alimentare, marino, ambienti corrosivi ad elevata igienicità.

Input seal without motor flange  
Anello di tenuta senza flangia motore



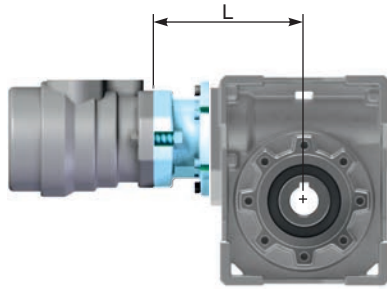
M30	Not available
M45	ATBA025x047x07C
M50	ATBA030x047x07C (1/7+1/30)
	ATBA025x047x07C (1/36+1/100)
M63	ATBA035x062x07C

Advised / Sugerito

# M Square - ACCESSORIES AND OPTIONS



Hydraulic motor flanges  
Flange motore idraulico



CODE **MY016**

OML8  
Input shaft  $\varnothing 16$  L

M50	81.5
M63	91.5
M85	110
M11	129.5

Q75/Q13/Q15 Not available

CODE **MY025**

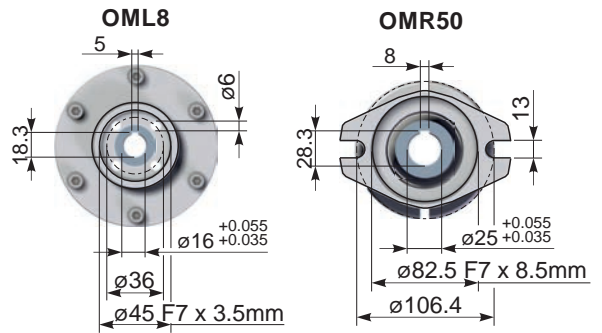
OMR50  
Input shaft  $\varnothing 25$  L

M63	130
M85	148
M11	167.5

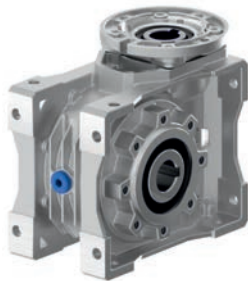
Q75/Q13/Q15 Not available

Advised / Suggestito

Agriculture, mobile, marine.  
Agricoltura, macchine operatrici, marino.



Housing with oil plug  
Tappo olio su cassa

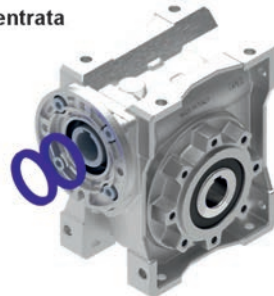


CODE **TOSCA**

M30	Not available
M45	Available
M50	Available
M63	Available
M75	Available
M85	Available

Advised / Suggestito

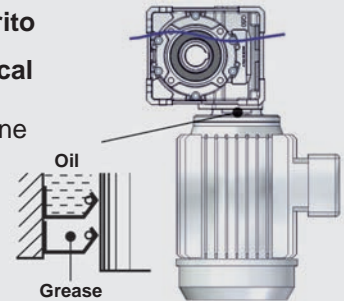
Double oil seals on input shaft  
Doppio anello di tenuta albero entrata



CODE **2ATEN**

Advised / Suggestito

Ideal for V6 vertical position.  
Ideale per posizione verticale V6.



	M30	M45	M50	M63	M75	M85	M11	M13	M15
<b>IEC</b>	56 B5	Not available	—	—	—	—	—	—	—
	63 B5	Not available	25x40x7	30x40x7 (1/5-1/30) 25x40x7 (1/36-1/100)	35x47x7	—	—	—	—
	71 B5	—	Not available	Not available	35x47x7	45x62x7	45x62x7	45x62x7	Not available
	80÷90 B5	—	—	Not available	35x47x7	45x62x7	45x62x7	45x62x7	Not available
	100÷112 B5	—	—	—	—	45x62x7	45x62x7	45x62x7	Not available
	132 B5	—	—	—	—	—	—	Not available	Not available
	160 B5	—	—	—	—	—	—	—	Not available
	56 B14	Not available	25x40x7	25x40x7 (1/36-1/100)	—	—	—	—	—
	63 B14	Not available	Not available	Not available	—	—	—	—	—
	71 B14	—	25x40x7	30x40x7 (1/5-1/30) 25x40x7 (1/36-1/100)	35x47x7	—	—	—	—
80 B14	—	—	30x40x7 (1/7-1/30)	35x47x7	45x62x7	45x62x7	45x62x7	—	
90 B14	—	—	—	35x47x7	45x62x7	45x62x7	45x62x7	—	
100÷112 B14	—	—	—	—	45x62x7	45x62x7	45x62x7	—	
132 B14	—	—	—	—	—	—	Not available	—	
<b>NEMA</b>	56C	—	25X40X7	25X40X7	35x47x7	—	45x62x7	—	—
	143/5TC	—	—	—	35x47x7	—	45x62x7	—	—
	182/4TC	—	—	—	—	—	45x62x7	—	—

# M Square - ACCESSORIES AND OPTIONS



Extended worm shaft kit  
Kit vite bisporgente

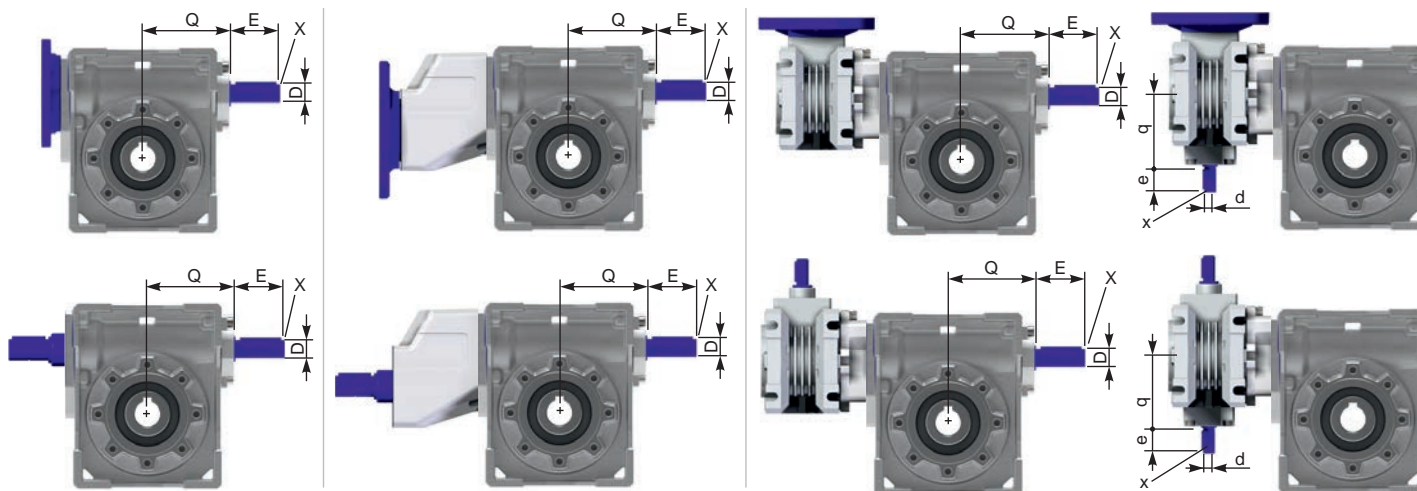
CODE **2VBS\_**

M30, M45 not available R version. / M30, M45 non disponibili versione R.  
M63, M75, M85 not available with kit / M63, M75, M85 non disponibile con kit.

Solid extended worm shaft  
Vite bisporgente integrale

CODE **2VBSI**

Solid extended worm shaft is not available for type M11.  
Vite bisporgente integrale non è disponibile per il M11.



	M30	M45	M50	M63	M75	M85	M11	
	—	P4M	P5M	P6M	P7M	M8Q	P1M	
	<b>33M</b> (M30+030)	<b>43M</b> (M45+030)	<b>53M</b> (M50+030)	<b>63M</b> (M75+030)	<b>64M</b> (M75+045)	<b>74M</b> (M75+045)	<b>84M</b> (M85+045)	<b>15M</b> (M11+050)
D	9	11	16	18	19	25	25	
E	20	30	30	48	40	50	60	
Q	56	68	69 ★	72.5	91.5	110	121	143
X	—	M5	M6	M6	M6	M8	M8	M8
d	9	9	9	9	11	11	11	16
e	20	20	20	20	30	30	30	30
q	56	56	56	56	74	74	74	77.5
x	—	—	—	—	M5	M5	M5	M6

★ Dimension with kit / Dimensione con kit.

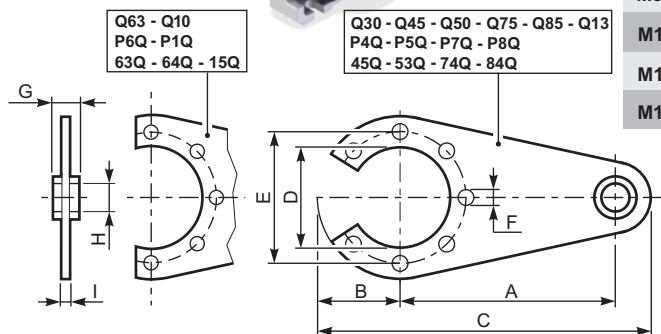
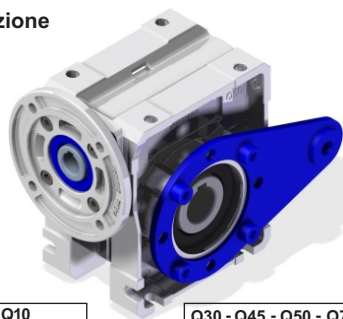
⚠ The units M13 and M15 are not available with extended worm.  
I riduttori M13 e M15 non sono disponibili con la vite sporgente.

Extended worm is produced only on request. Please contact us for minimum quantity.  
La vite con sporgenza è fornita solo su richiesta. Contattarci per quantità minima.

# M Square - ACCESSORIES AND OPTIONS



## Reaction arm Braccio di reazione

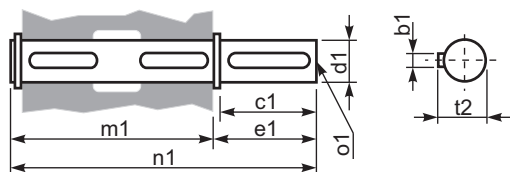
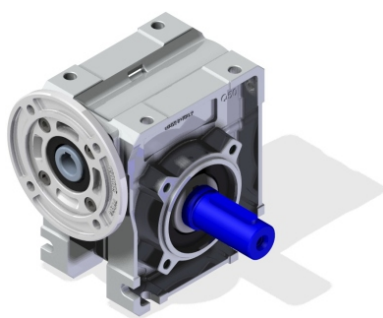


Q63 - Q10  
P6Q - P1Q  
63Q - 64Q - 15Q

Q30 - Q45 - Q50 - Q75 - Q85 - Q13  
P4Q - P5Q - P7Q - P8Q  
45Q - 53Q - 74Q - 84Q

			A	B	C	D	E	F	G	H	I
M30	—	—	85	38	138	55	65	7	14	8	4
M45	P4M	43M	100	44	162	60	75	7	14	10	4
M50	P5M	53M	100	50	168	70	85	9	14	10	4
M63	P6M	63M/64M	150	60	228	80	95	9	14	10	6
M75	P7M	74M	200	67.5	297.5	95	115	9	25	20	6
M85	P8M	84M	200	80	320	111	130	11	25	21	6
M11	P1M	15M	250	100	385	130	165	13	30	25	6
M13	—	—	250	125	410	180	215	13	30	25	6
M15	—	—	250	125	410	180	215	13	30	25	6

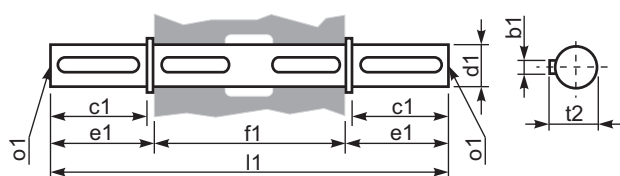
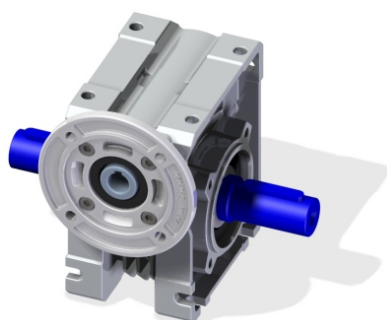
## Single output shaft Albero lento a una sporgenza



			b1	c1	d1 <sup>-0.005</sup> <sub>-0.020</sub>	e1	m1	n1	o1	t2
M30	—	—	5	25	14	35.5	59	94.5	M5x14	16
M45	P4M	43M	6	32	18	43	70	113	M6x18	20.5
			6	40	19	58.5	70	128.5	M8x20	21.5
M50	P5M	53M	8	52	25	59.5	86.5	146	M8x20	28
			8	50	24	68.8	86.5	155	M8x20	27
M63	P6M	63M/64M	8	50	25 h6	53.5	119.5	173	M10x23	28
M75	P7M	74M	8	60	28 h6	63.5	128.5	192	M10x20	31
M85	P8M	84M	10	60	35	73.5	141	214.5	M10x23	38
M11	P1M	15M	12	80	42 h6	84.5	164.5	249	M16x28	45
M13	—	—	14	80	45	85	180	265	M16	48.5
M15	—	—	14	82	50	87	210	297	M16	53.5

● Type S / Tipo S

## Double output shaft Albero lento a doppia sporgenza



			b1	c1	d1 <sup>-0.005</sup> <sub>-0.020</sub>	e1	f1	l1	o1	t2
M30	—	—	5	25	14	35.5	55	126	M5x14	16
M45	P4M	43M	6	32	18	43	65	151	M6x18	20.5
			-	-	-	-	-	-	-	-
M50	P5M	53M	8	52	25	59.5	81	200	M8x20	28
			-	-	-	-	-	-	-	-
M63	P6M	63M/64M	8	50	25 h6	53.5	112	219	M10x23	28
M75	P7M	74M	8	60	28 h6	63.5	120	247	M10x20	31
M85	P8M	84M	10	60	35	73.5	135	282	M10x23	38
M11	P1M	15M	12	80	42 h6	84.5	155	324	M16x28	45
M13	—	—	14	80	45	85	170	340	M16	48.5
M15	—	—	14	82	50	87	200	374	M16	53.5

● Not available double output shaft for Type S  
Albero lento doppio non disponibile per Tipo S