



The dynamic efficiency is **0.98** for all ratios

Input speed ( $n_1$ ) = 1400 min<sup>-1</sup>

Output speed $n_2$ [min <sup>-1</sup> ]	Ratio $i$	Motor power $P_{1M}$ [kW]	Output torque $M_{2M}$ [Nm]	Service factor $f.s$	Nominal power $P_{1R}$ [kW]	Nominal torque $M_{2R}$ [Nm]	B5 motor flanges		B14 motor flanges			Output shaft 	Ratios code 
							-	-	-Q 71	-R 80	-T 90		
891	<b>1.57</b>	1.5	16	1.3	<b>1.9</b>	<b>20</b>			C	C		2844	01
493	<b>2.84</b>	1.5	28	1.2	<b>1.8</b>	<b>35</b>			C	C		1954	02
425	<b>3.29</b>	1.5	33	1.2	<b>1.7</b>	<b>38</b>			C	C		1756	03
362	<b>3.87</b>	1.5	39	1.0	<b>1.5</b>	<b>40</b>			C	C		1558	04
303	<b>4.62</b>	1.5	46	1.0	<b>1.5</b>	<b>47</b>			C	C		1360	05
222	<b>6.30</b>	1.1	46	1.0	<b>1.1</b>	<b>46</b>			C	C		1063	06
170	<b>8.22</b>	0.55	30	1.3	<b>0.69</b>	<b>38</b>			C	C		974	07
129	<b>10.86</b>	0.37	27	1.0	<b>0.39</b>	<b>28</b>			C	C		776	08

Motor flanges available  
Flange motore disponibili

 B) Supplied with reduction bushing  
Fornito con bussola di riduzione

B) Available on request without reduction bushing  
Disponibile a richiesta senza bussola di riduzione

 C) Motor flange holes position  
Posizione fori flangia motore

## Lubrication

Lubrificazione

Unit 4111 is supplied with synthetic oil to assure long life lubrication.  
Food grade oil is available on request.

See Table 1 for lubrication and recommended quantity.

See Table 2 for possible radial and axial loads on the gearbox.

*Il riduttore tipo 4111 viene fornito con olio sintetico e lubrificazione tipo "long life".  
Disponibile a richiesta olio alimentare.*

*Vedi Tabella 1 per oli e quantità consigliati.*

*Vedi Tabella 2 per i carichi radiali e assiali applicabili al riduttore.*

**Oil quantity for  
all positions:  
0.14 L**

Quantità olio per tutte  
le posizioni: 0.14 L

**Shell**  
Omala S4 WE 320

**Eni**  
Telium VSF 320

## Radial and axial loads

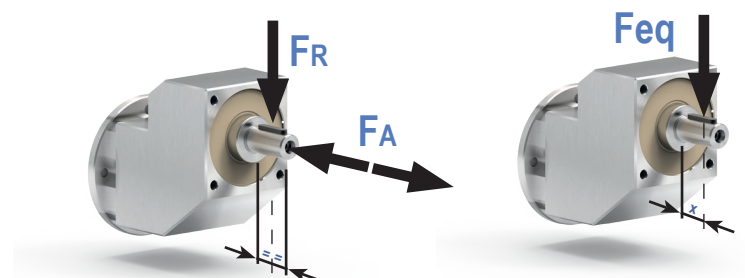
Carichi radiali e assiali

### Output shaft

Albero di uscita

$n_2$ [min <sup>-1</sup> ]	$F_A$ [N]	$F_R$ [N]
<b>700</b>	182	910
<b>600</b>	200	1000
<b>400</b>	230	1150
<b>300</b>	250	1250
<b>200</b>	290	1450
<b>140</b>	320	1600

$$F_{eq} = F_R \cdot \frac{48.5}{X + 28.5}$$



Tab. 1

Tab. 2

P4111-N... **Basic gearbox**  
Riduttore base

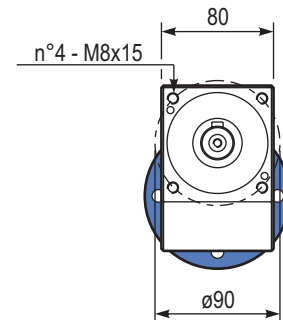
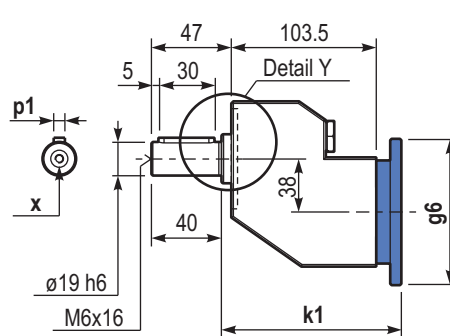
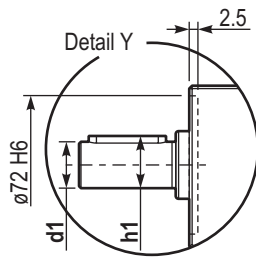
Gearbox weight  
peso riduttore **5.5 kg**

**Output shafts** / albero di uscita

	Shaft - d1	p1	h1	x
<b>Standard</b>	ø19x40	6	21.5	M6x16

**Input flanges** / flange di entrata

	Kit code	k1	g6
<b>71 B14</b>	KI634047	128.5	105
<b>80 B14</b>	KI634046	130.5	120
<b>90 B14</b>	KI634041	130.5	140



P4111-F... **Output flange**  
Flangia di uscita

