

Input speed (n_1) = 1400 min⁻¹

Output speed n_2 [min ⁻¹]	Ratio i	Motor power P_{1M} [kW]	Output torque M_{2M} [Nm]	Service factor $f.s$	Nominal power P_{1R} [kW]	Nominal torque M_{2R} [Nm]	B5 motor flanges			B14 motor flanges			Dynamic efficiency RD	Tooth module [mm]	Ratios code
							-	-	-	-P	-Q	-R			
200	7	0.75	29	1.9	1.5	57	-	-	-	63	71	80	82	2.5	01
140	10	0.75	41	1.5	1.1	62	-	-	-	63	71	80	80	2.4	02
100	14	0.75	57	1.2	0.90	68	-	-	-	63	71	80	79	2.6	03
78	18	0.55	51	1.2	0.67	62	-	-	-	63	71	80	75	2.0	04
54	26	0.55	67	1.0	0.54	66	-	-	-	63	71	80	69	2.7	05
47	30	0.55	79	0.9	0.50	72	-	-	-	63	71	80	70	2.5	12
39	36	0.37	63	1.2	0.43	72	-	-	-	63	71	80	69	2.1	06
33	43	0.37	72	1.0	0.35	68	-	-	-	63	71	80	66	1.8	07
28	50	0.25	53	1.2	0.31	66	-	-	-	63	71	80	62	1.5	13
23	60	0.25	59	1.0	0.26	62	-	-	-	63	71	80	58	1.3	08
21	68	0.25	66	0.9	0.22	58	-	-	-	63	71	80	57	1.2	09
17.5	80	0.18	53	1.1	0.19	57	-	-	-	63	71	80	54	1.0	10
14	100	0.12	41	1.3	0.15	51	-	-	-	63	71	80	50	0.8	11

- Motor flanges available**
Flange motore disponibili
- B) Supplied with reduction bushing**
Fornito con bussola di riduzione
- B) Available on request without reduction bushing**
Disponibile a richiesta senza bussola di riduzione
- C) Motor flange holes position**
Posizione fori flangia motore

Lubrication

Lubrificazione

Unit 150 is supplied with synthetic oil to assure long life lubrication. Food grade oil is available on request. See Table 1 for lubrication and recommended quantity. See Table 2 for possible radial and axial loads on the gearbox.

Il riduttore tipo 150 viene fornito con olio sintetico e lubrificazione tipo "long life". Disponibile a richiesta olio alimentare. Vedi Tabella 1 per oli e quantità consigliati. Vedi Tabella 2 per i carichi radiali e assiali applicabili al riduttore.

Shell Omala S4 WE 320 Eni Telium VSF 320

B3 Standard 0.22 L		B8 On request 0.22 L	
B6 On request 0.22 L		V5 On request 0.22 L	
B7 On request 0.28 L		V6 On request 0.22 L	

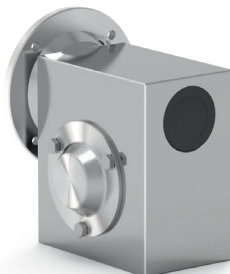
For more details on lubrication and plugs check our website.
Per maggiori dettagli su lubrificazione e tappi olio vedi il nostro sito web.

Tab. 1

Suggested Sugerito

Stainless steel protection cap (on request).
Coperchio di protezione in acciaio inox a richiesta.

Kit cod. KI500211



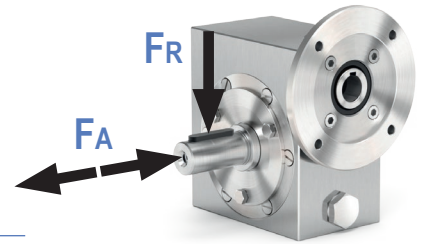
Radial and axial loads

Carichi radiali e assiali

Output shaft

Albero di uscita

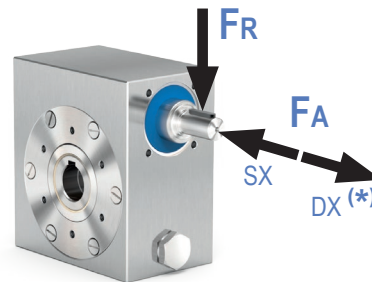
n_2 [min ⁻¹]	F_A [N]	F_R [N]
200	240	1200
150	280	1400
100	300	1500
75	340	1700
50	380	1900
25	480	2500
15	560	2800



Input shaft

Albero in entrata

n_1 [min ⁻¹]	F_A [N]	F_R [N]
1400	76	380



* Strong axial loads in the DX direction are not allowed.

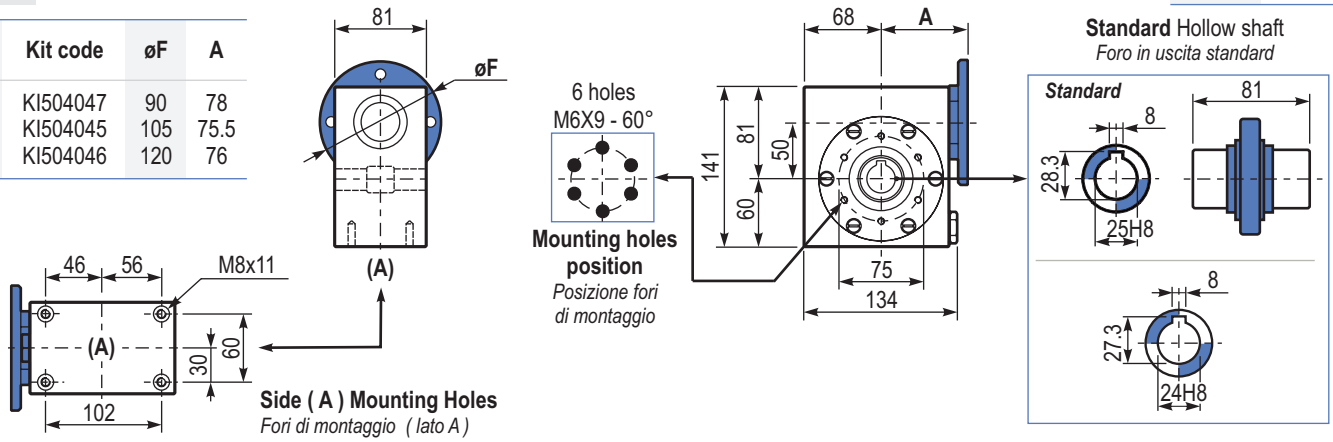
* Non sono consentiti forti carichi assiali con direzione DX

Tab. 2

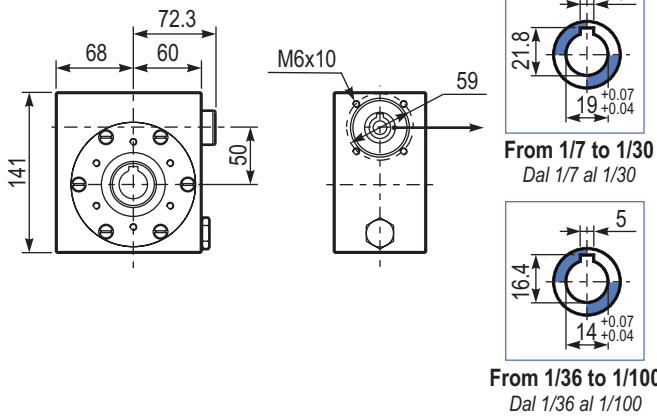
PI50UNI... **Basic gearbox**
Riduttore base

Gearbox weight **7.3 kg**
peso riduttore

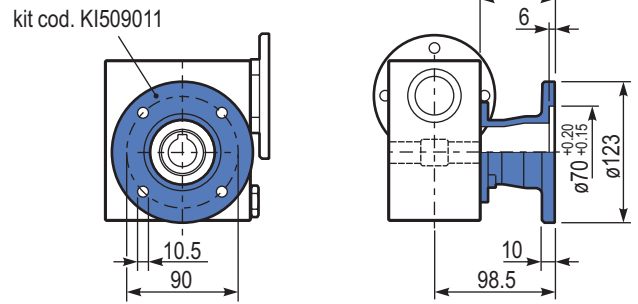
M. flanges	Kit code	øF	A
63B14	KI504047	90	78
71B14	KI504045	105	75.5
80B14	KI504046	120	76



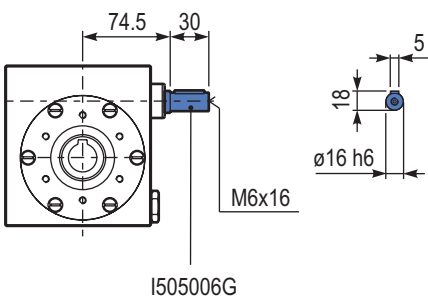
BI50UNI... **Modular base**
Base modulare



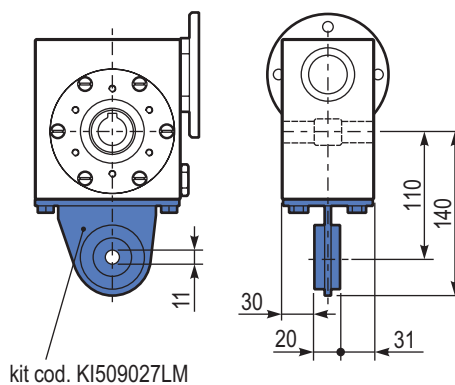
PI50FLL... **Output flange**
Flangia uscita



RI50UNI... **Input shaft**
Albero in entrata



PI50BRI... **Reaction arm**
Braccio di reazione



PI50...SMF.. **Single Shaft**
Albero lento semplice

