

Input speed (n_1) = 1400 min⁻¹

Output speed n_2 [min ⁻¹]	Ratio i	Motor power P_{1M} [kW]	Output torque M_{2M} [Nm]	Service factor $f.s$	Nominal power P_{1R} [kW]	Nominal torque M_{2R} [Nm]	B5 motor flanges			B14 motor flanges			Dynamic efficiency RD	Tooth module [mm]	Ratios code
							-	-	-	-R	-T	-U			
200	7	4.0	168	1.5	6.1	257	-	-	-	B	B		88	4.23	01
140	10	4.0	218	1.3	5.2	284	-	-	-	B	B		80	4.2	02
100	14	3.0	223	1.4	4.1	305	-	-	-	B	B		78	4.5	03
70	20	2.2	237	1.2	2.7	294	-	-	-	B	B		79	3.4	04
64	22	2.2	258	1.1	2.5	294	-	-	-	B	B		78	3.1	05
50	28	2.2	315	1.1	2.4	347	-	-	-	B	B		75	4.7	06
37	38	1.5	276	1.2	1.8	336	-	-	-	B			71	3.5	07
30	46	1.5	320	1.0	1.5	326	-	-	-	B			68	3.1	08
27	52	1.1	258	1.1	1.2	289	-	-	-	B			66	2.7	09
21	67	1.1	327	0.9	0.97	289	-	-	-	B			65	2.1	10
18.9	74	0.75	220	1.2	0.91	268	-	-	-	B			58	1.9	11
14.6	96	0.55	191	1.3	0.70	242	-	-	-	B			53	1.5	12

- Motor flanges available *Flange motore disponibili*
- B) Supplied with reduction bushing *Fornito con bussola di riduzione*
- B) Available on request without reduction bushing *Disponibile a richiesta senza bussola di riduzione*
- C) Motor flange holes position *Posizione fori flangia motore*

Lubrication *Lubrificazione*

Unit 185 is supplied with synthetic oil to assure long life lubrication. Food grade oil is available on request. See Table 1 for lubrication and recommended quantity. See Table 2 for possible radial and axial loads on the gearbox.

Il riduttore tipo 185 viene fornito con olio sintetico e lubrificazione tipo "long life". Disponibile a richiesta olio alimentare. Vedi Tabella 1 per oli e quantità consigliati. Vedi Tabella 2 per i carichi radiali e assiali applicabili al riduttore.

Shell Omala S4 WE 320 Eni Telium VSF 320

B3 Standard 1.40 L		B8 On request 1.40 L	
B6 On request 1.40 L		V5 On request 1.40 L	
B7 On request 1.70 L		V6 On request 1.40 L	

For more details on lubrication and plugs check our website. *Per maggiori dettagli su lubrificazione e tappi olio vedi il nostro sito web.*

Tab. 1

Suggested *Suggerito*

Stainless steel protection cap (on request). *Coperchio di protezione in acciaio inox a richiesta.*

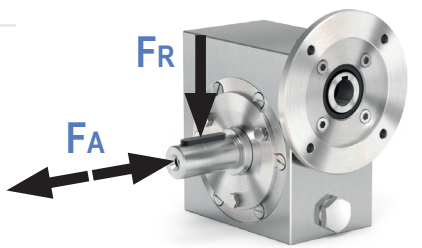
Kit cod. KI850211



Radial and axial loads *Carichi radiali e assiali*

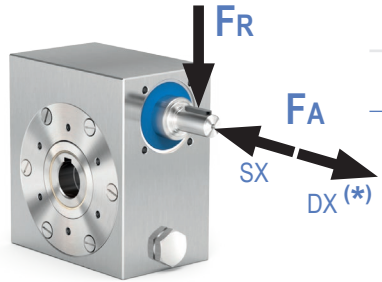
Output shaft *Albero di uscita*

n_2 [min ⁻¹]	F_A [N]	F_R [N]
200	500	2500
150	580	2900
100	600	3000
75	700	3500
50	800	4000
25	1000	5000
15	1160	5800



Input shaft *Albero in entrata*

n_1 [min ⁻¹]	F_A [N]	F_R [N]
1400	130	650



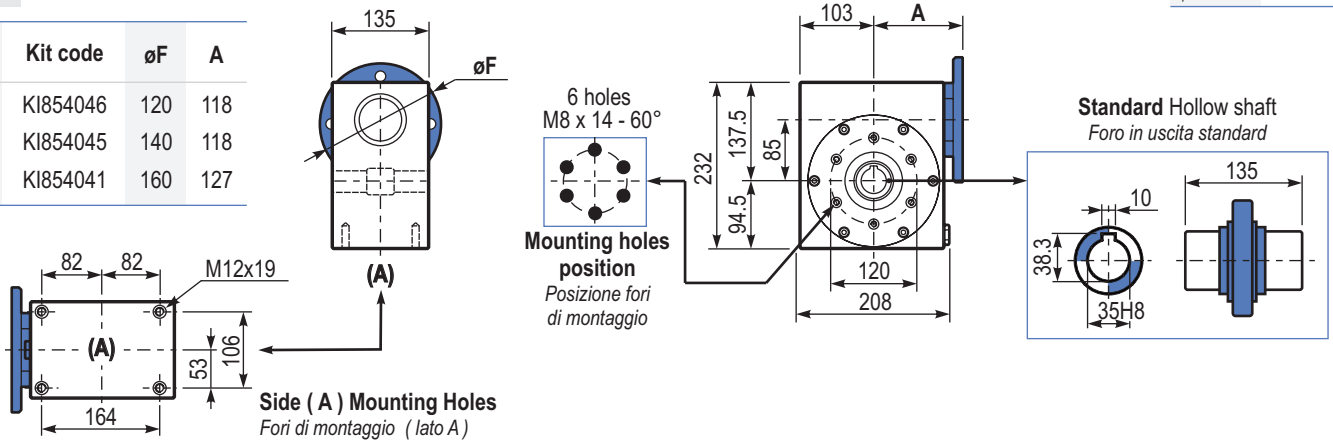
* Strong axial loads in the DX direction are not allowed. ** Non sono consentiti forti carichi assiali con direzione DX*

Tab. 2

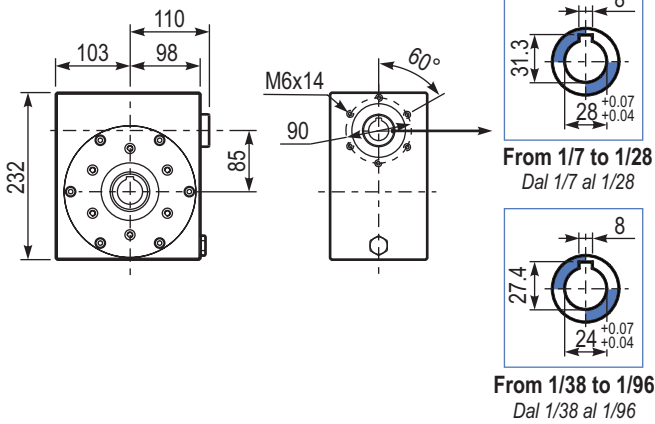
PI85UNI... **Basic gearbox**
Riduttore base

Gearbox weight
peso riduttore **23.3 kg**

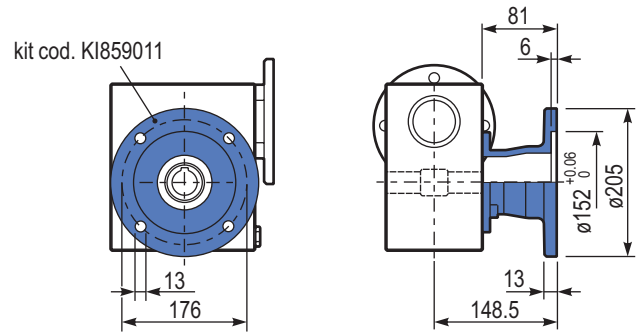
M. flanges	Kit code	øF	A			
80B14	KI854046	120	118			
90B14	KI854045	140	100-112B14	KI854041	160	127
100-112B14	KI854041	160	127			



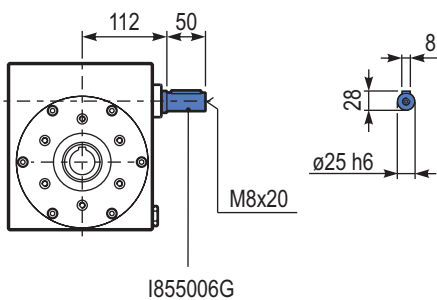
B185UNI... **Modular base**
Base modulare



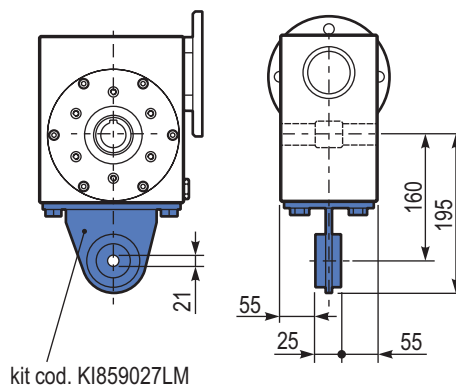
PI85FLL... **Output flange**
Flangia uscita



R185UNI... **Input shaft**
Albero in entrata



PI85BRI... **Reaction arm**
Braccio di reazione



PI85...SMK... **Single Shaft**
Albero lento semplice

