

# Z50

# 72 Nm

## VFZ series

# Aluminum worm gearboxes (NTT treatment)

Riduttori a vite senza fine in alluminio (trattamento NTT)

Input speed ( $n_1$ ) = 1400 min<sup>-1</sup>

Output speed $n_2$ [min <sup>-1</sup> ]	Ratio $i$	Motor power $P_{1M}$ [kW]	Output torque $M_{2M}$ [Nm]	Service factor $f_s$	Nominal power $P_{1R}$ [kW]	Nominal torque $M_{2R}$ [Nm]	B5 motor flanges				B14 motor flanges				Dynamic efficiency RD	Tooth module $\frac{1}{2}$ [mm]	Ratio code
							-	-	-	-	-O	-P	-Q	-R			
200	7	0.75	29	1.9	1.5	57	-	-	-	-	B-C	B		82	2.5	01	
140	10	0.75	41	1.5	1.1	62	-	-	-	-	B-C	B		80	2.4	02	
100	14	0.75	57	1.2	0.90	68	-	-	-	-	B-C	B		79	2.6	03	
78	18	0.55	51	1.2	0.67	62	-	-	-	-	B-C	B		75	2.0	04	
54	26	0.55	67	1.0	0.54	66	-	-	-	-	B-C	B		69	2.7	05	
47	30	0.55	79	0.9	0.50	72	-	-	-	-	B-C	B		70	2.5	12	
39	36	0.37	63	1.2	0.43	72	-	-	-	B-C	B-C		69	2.1	06		
33	43	0.37	72	1.0	0.35	68	-	-	-	B-C	B-C		66	1.8	07		
28	50	0.25	53	1.2	0.31	66	-	-	-	B-C	B-C		62	1.5	13		
23	60	0.25	59	1.0	0.26	62	-	-	-	B-C	B-C		58	1.3	08		
21	68	0.25	66	0.9	0.22	58	-	-	-	B-C	B-C		57	1.2	09		
17.5	80	0.18	53	1.1	0.19	57	-	-	-	B-C	B-C		54	1.0	10		
14	100	0.12	41	1.3	0.15	51	-	-	-	B-C	B-C		50	0.8	11		

Motor flanges available  
Flange motore disponibili



B) Available on request without reduction bushing  
Disponibile a richiesta senza bussola di riduzione



C) Motor flange holes position  
Posizione fori flangia motore

## Lubrication

Lubrificazione

Unit Z50 is supplied with synthetic oil to assure long life lubrication. Food grade oil is available on request.

See Table 1 for lubrication and recommended quantity.

See Table 2 for possible radial and axial loads on the gearbox.

Il riduttore tipo Z50 viene fornito con olio sintetico e lubrificazione tipo "long life".

Disponibile a richiesta olio alimentare.

Vedi Tabella 1 per oli e quantità consigliati.

Vedi Tabella 2 per i carichi radiali e assiali applicabili al riduttore.

Oil quantity for all positions:  
0.12Lt.

Quantità olio per tutte le posizioni: 0.12Lt.

Agip  
Telium VSF 320

Shell  
Omala S4 WE 320

Tab. 1

## Suggested

Suggerito

Stainless steel protection cap (on request).

Coperchio di protezione in acciaio inox a richiesta.



Kit cod. KN500209

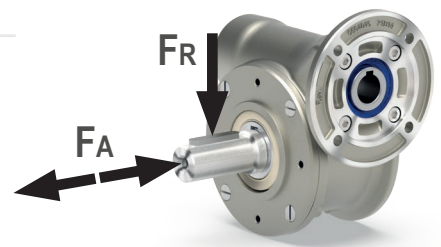
## Radial and axial loads

Carichi radiali e assiali

### Output shaft

Albero di uscita

$n_2$ [min <sup>-1</sup> ]	$F_A$ [N]	$F_R$ [N]
200	240	1200
150	280	1400
100	300	1500
75	340	1700
50	380	1900
25	480	2500
15	560	2800



### Input shaft

Albero in entrata

$n_1$ [min <sup>-1</sup> ]	$F_A$ [N]	$F_R$ [N]
1400	76	380

\* Strong axial loads in the DX direction are not allowed.

\* Non sono consentiti forti carichi assiali con direzione DX

Tab. 2

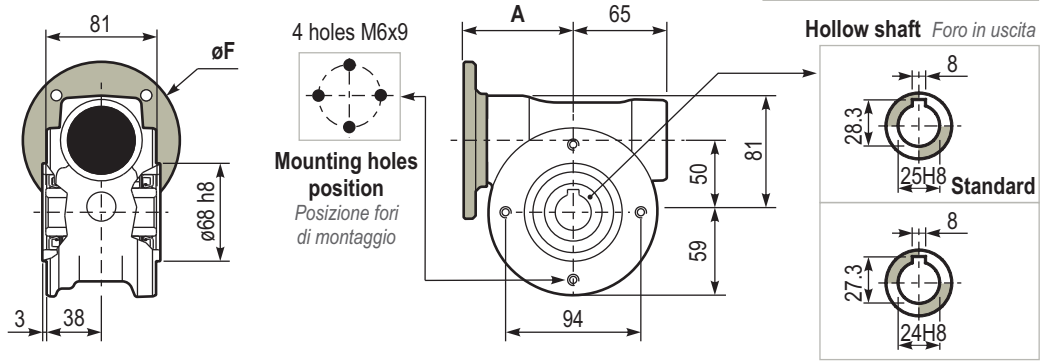
72  
Nm

Z50

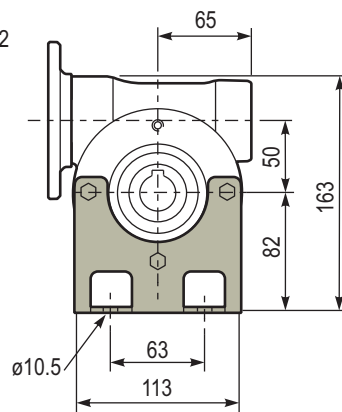
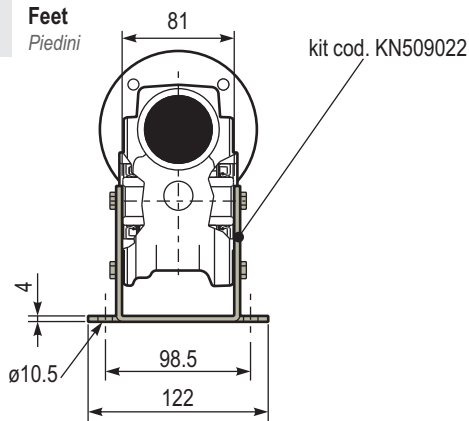
**PZ50UNI..** Basic gearbox  
*Riduttore base*

**Gearbox weight** 3.70 kg  
*Peso riduttore*

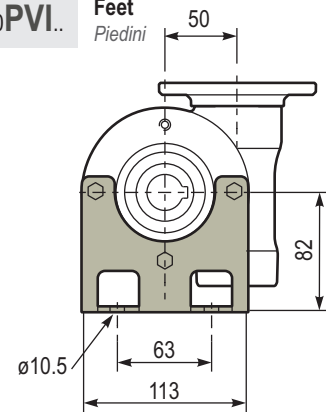
M. flanges	Kit code	øF	A
56B14	KZ504049	80	76
63B14	KZ504047	90	78.5
71B14	KZ504045	105	76
80B14	KZ504046	120	76.5



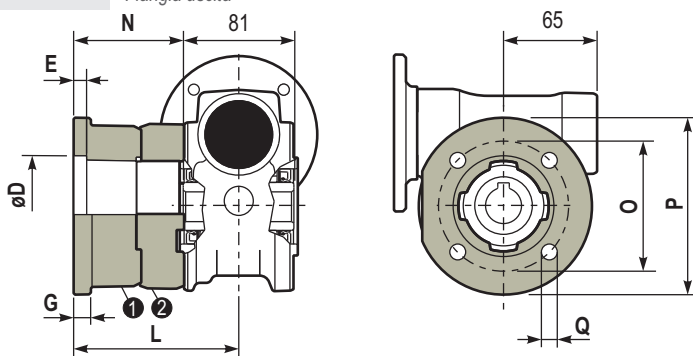
**PZ50PAI..** Feet  
*Piedini*



**PZ50PVI..** Feet  
*Piedini*

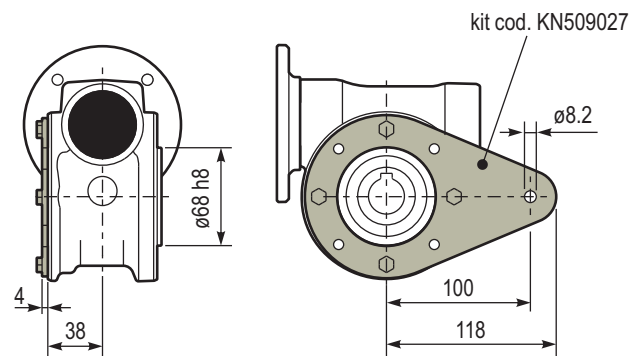


**PZ50FL..** Output flange  
*Flangia uscita*

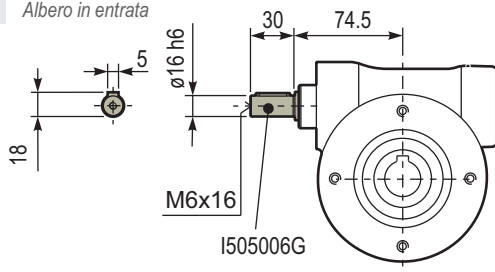


Type	øD	E	G	L	N	O	P	Q	Kit code
C	70 <sup>+0.20</sup> / <sub>+0.15</sub>	9	12	85	44.5	90	123	10.5	① KZ509010 ② -
L	70 <sup>+0.20</sup> / <sub>+0.15</sub>	9	12	114.5	74	90	123	10.5	① KZ509010 ② KZ500200

**PZ50BRI..** Reaction arm  
*Braccio di reazione*



**RZ50UNI..** Input shaft  
*Albero in entrata*



**PZ50..SMS** Single output shaft  
*Albero semplice in uscita*

