

Z85


347 Nm

VFZ series

Aluminum worm gearboxes (NTT treatment)

Riduttori a vite senza fine in alluminio (trattamento NTT)

Input speed (n_1) = 1400 min⁻¹

Output speed n_2 [min ⁻¹]	Ratio i	Motor power P_{1M} [kW]	Output torque M_{2M} [Nm]	Service factor f_s	Nominal power P_{1R} [kW]	Nominal torque M_{2R} [Nm]	B5 motor flanges				B14 motor flanges			Dynamic efficiency RD	Tooth module  [mm]	Ratio code		
							-	-	-	-	-R	-T	-U					
200	7	4.0	168	1.5	6.1	257	-	-	-	-	B	B	80	90	100 112	88	4.23	01
140	10	4.0	218	1.3	5.2	284	-	-	-	-	B	B	80	90	100 112	80	4.2	02
100	14	3.0	223	1.4	4.1	305	-	-	-	-	B	B	78	90	100 112	78	4.5	03
70	20	2.2	237	1.2	2.7	294	-	-	-	-	B	B	79	90	100 112	79	3.4	04
64	22	2.2	258	1.1	2.5	294	-	-	-	-	B	B	78	90	100 112	78	3.1	05
50	28	2.2	315	1.1	2.4	347	-	-	-	-	B	B	75	90	100 112	75	4.7	06
37	38	1.5	276	1.2	1.8	336	-	-	-	-	B	B	71	90	100 112	71	3.5	07
30	46	1.5	320	1.0	1.5	326	-	-	-	-	B	B	68	90	100 112	68	3.1	08
27	52	1.1	258	1.1	1.2	289	-	-	-	-	B	B	66	90	100 112	66	2.7	09
21	67	1.1	327	0.9	0.97	289	-	-	-	-	B	B	65	90	100 112	65	2.1	10
18.9	74	0.75	220	1.2	0.91	268	-	-	-	-	B	B	58	90	100 112	58	1.9	11
14.6	96	0.55	191	1.3	0.70	242	-	-	-	-	B	B	53	90	100 112	53	1.5	12

Motor flanges available
Flange motore disponibili

 B) Available on request without reduction bushing
Disponibile a richiesta senza bussola di riduzione

 C) Motor flange holes position
Posizione fori flangia motore

Lubrication

Lubrificazione

Unit Z85 is supplied with synthetic oil to assure long life lubrication.

Food grade oil is available on request.

See Table 1 for lubrication and recommended quantity.

See Table 2 for possible radial and axial loads on the gearbox.

Il riduttore tipo Z85 viene fornito con olio sintetico e lubrificazione tipo "long life".

Disponibile a richiesta olio alimentare.

Vedi Tabella 1 per oli e quantità consigliati.

Vedi Tabella 2 per i carichi radiali e assiali applicabili al riduttore.

Oil quantity for
all positions:
0.95Lt.

Quantità olio per tutte
le posizioni: 0.95Lt.

Agip
Telium VSF 320

Shell
Omala S4 WE 320

Tab. 1

Suggested

Suggerito

Stainless steel protection cap
(on request).

Coperchio di protezione in
acciaio inox a richiesta.

Kit cod. KN850209



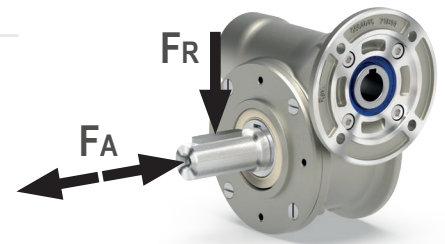
Radial and axial loads

Carichi radiali e assiali

Output shaft

Albero di uscita

n_2 [min ⁻¹]	F_A [N]	F_R [N]
200	500	2500
150	580	2900
100	600	3000
75	700	3500
50	800	4000
25	1000	5000
15	1160	5800



Input shaft

Albero in entrata

n_1 [min ⁻¹]	F_A [N]	F_R [N]
1400	130	650

* Strong axial loads in the DX direction are not allowed.

* Non sono consentiti forti carichi assiali con direzione DX

Tab. 2

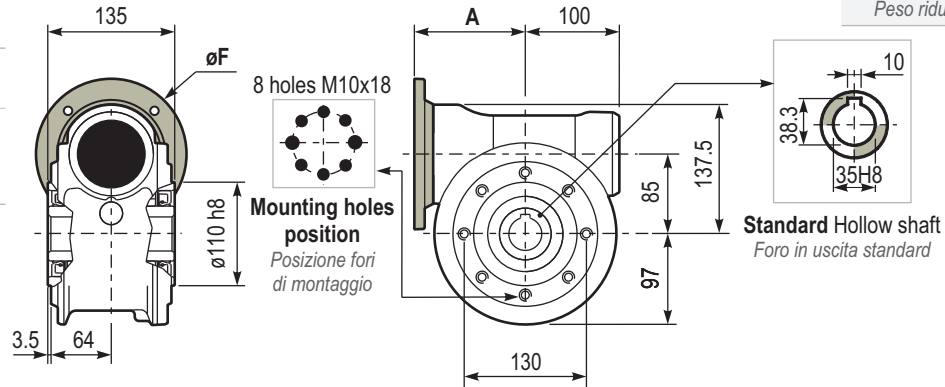
347
Nm

Z85

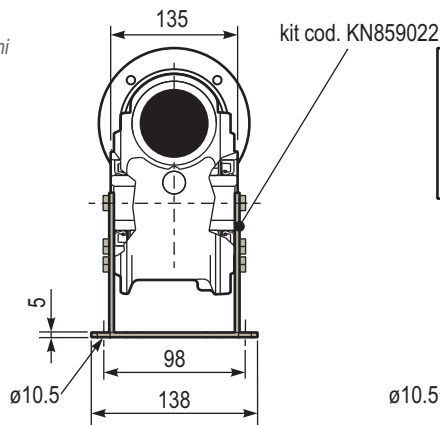
PZ85UNI.. Basic gearbox
Riduttore base

Gearbox weight 13.00 kg
Peso riduttore

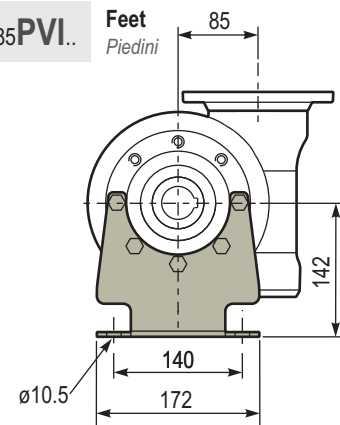
M. flanges	Kit code	øF	A
80B14	KZ854046	120	118.5
90B14	KZ854045	140	118.5
100/112B14	KZ854047	160	127.5



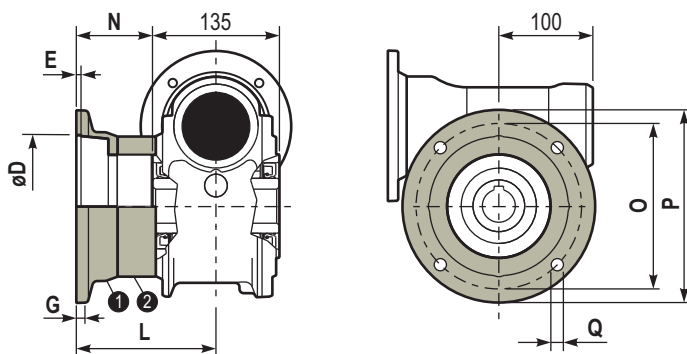
PZ85PAI.. Feet
Piedini



PZ85PVI.. Feet
Piedini

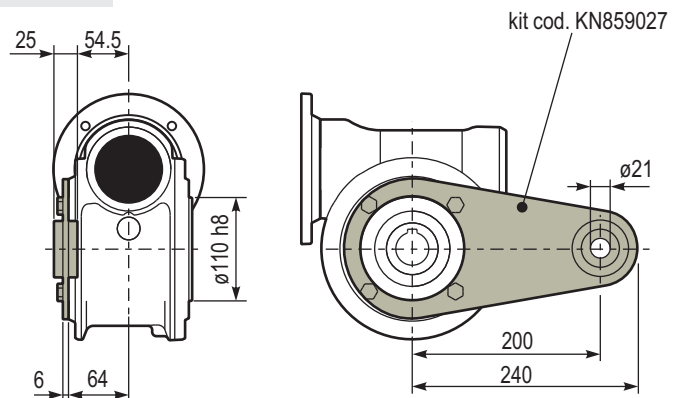


PZ85FL.. Output flange
Flangia uscita

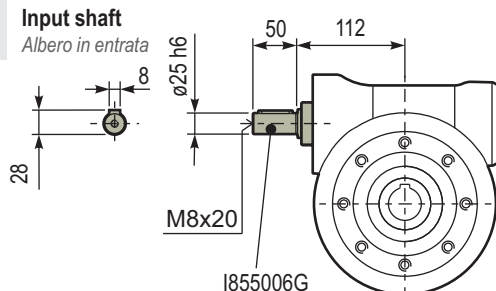


Type	øD	E	G	L	N	O	P	Q	Kit code
C	152 ^{+0.06} _{-0.00}	5	16	108	40.5	176	205	13	① KZ859010 ② -
L	152 ^{+0.06} _{-0.00}	5	16	148.5	81	176	205	13	① KZ859010 ② KZ850201

PZ85BRI.. Reaction arm
Braccio di reazione



RZ85UNI.. Input shaft
Albero in entrata



PZ85..SMS Single output shaft
Albero semplice in uscita

