




### Z63 Ratios/Rating Rapporti/Selezione Z63

Ratio	Max output torque <b>** M<sub>2R</sub></b> [Nm]	Tooth module  [mm]	Standard input bore	Ratio code 
i <sub>a</sub>				
7	144	3.1	ø24	01
10	155	3.1	ø24	02
15	158	3.1	ø24	03
19	158	2.6	ø24	04
24	163	2.0	ø24	05
30	168	3.2	ø24	06
36	169	2.7	ø24	07
40	161	2.5	ø24	13
45	156	2.1	ø19	08
60	150	1.6	ø19	12
67	142	1.5	ø19	09
80	136	1.3	ø19	10
94	136	1.1	ø19	11

Z63 weight  
Peso Z63

6.00 kg

### 211Z Ratios/Power Rapporti/potenza 211Z

Ratio	Max input power <b>** P<sub>1M</sub></b> [kW]	Standard output shaft 	Ratios code
i <sub>b</sub>			
2.05	0.37	ø14	01
2.35	0.37	ø14	02
2.80	0.37	ø14	03
3.38	0.37	ø14	04
4.70	0.37	ø14	05
6.22	0.37	ø14	06
8.29	0.37	ø14	07
9.83	0.25	ø14	08



211Z weight  
Peso 211Z

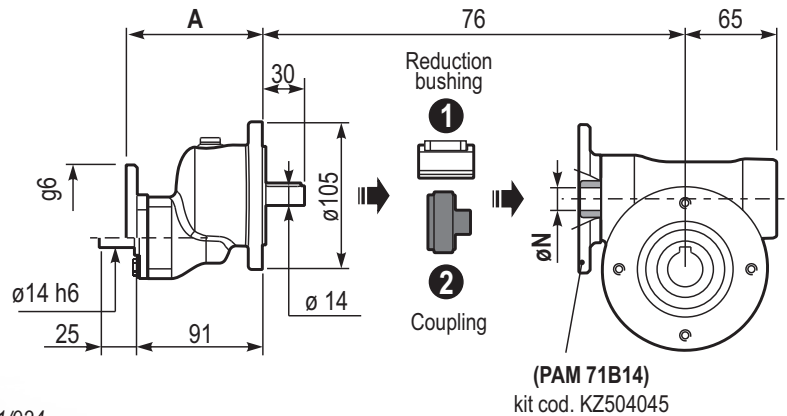
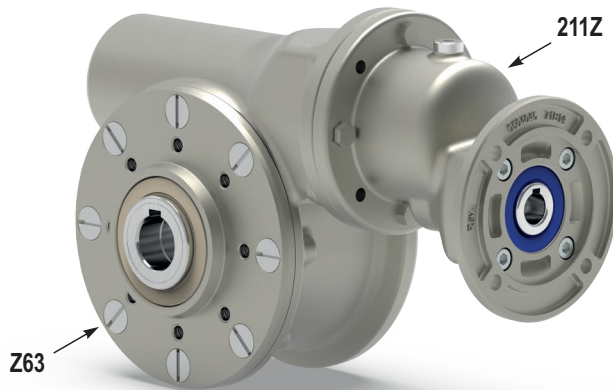
1.40 kg

### 211Z Motor flanges Flange motore 211Z

	kit code	g6	A
63B5	KD454041	138	99.5
71B5	KD454042	160	97
56B14	KD454049	80	97
63B14	KD454047	90	99.5
71B14	KD454045	105	97

### How to connect Z63+211Z Come collegare Z63 + 211Z

Worm gearbox Standard input bore	Ratio multiplier Output shaft	Connection kit	
		With standard input bore	With coupling
D63	øN		
Ratios from 1/7÷1/40	ø24	KBR14/24	KD14P
Ratios from 1/45÷1/94	ø19	KBR14/19	



Ratios range: from 1/14 to 1/924 Range rapporti: da 1/14 a 1/924

## Lubrication

### Lubrificazione

Unit **Z63+211Z** is supplied with synthetic oil to assure long life lubrication. Food grade oil is available on request. See Table 1 for lubrication and recommended quantity.

Il riduttore tipo **Z63+211Z** viene fornito con olio sintetico e lubrificazione tipo "long life".

Disponibile a richiesta olio alimentare. Vedi Tabella 1 per oli e quantità consigliati.

For all details on lubrication and plugs check our website.

Per maggiori dettagli su lubrificazione e tappi olio vedi il nostro sito web.

<b>Z63: 0.40 L</b>	SHELL: Omala S4 WE 320	ENI: Telium VSF 320
<b>211Z: 0.05 L</b>	SHELL: Omala S4 WE 320	ENI: Telium VSF 320

## Calculate total ratio and output speed

Calcola il rapporto totale e la velocità di uscita

Ratios range: from 1/14 to 1/924

Range rapporti: da 1/14 a 1/924

$$i_{TOT} = i_a \cdot i_b$$

Ex.: 1/94 x 1/9.83 = 1/924 (Max ratio)

Output speed (n<sub>2</sub>)

Velocità di uscita

$$n_2 = n_1 : i_{TOT}$$

Ex.: 1448 : 924 = 1.57 rpm

i<sub>a</sub> : Z63 ratio - Rapporto Z63  
i<sub>b</sub> : 211Z ratio - Rapporto 211Z

\*\* Make sure input power for **211Z** and output torque for **Z63** is as catalogue ratios.

\*\* Prestare attenzione a selezionare la potenza in entrata del **211Z** ed il momento torcente del **Z63** secondo le tabelle del catalogo.

n<sub>1</sub> Input speed  
Velocità di ingresso