

TR SAEJ 744C STANDARTLARINA GÖRE
MOTOR BAĞLANTI FLANŞLARI

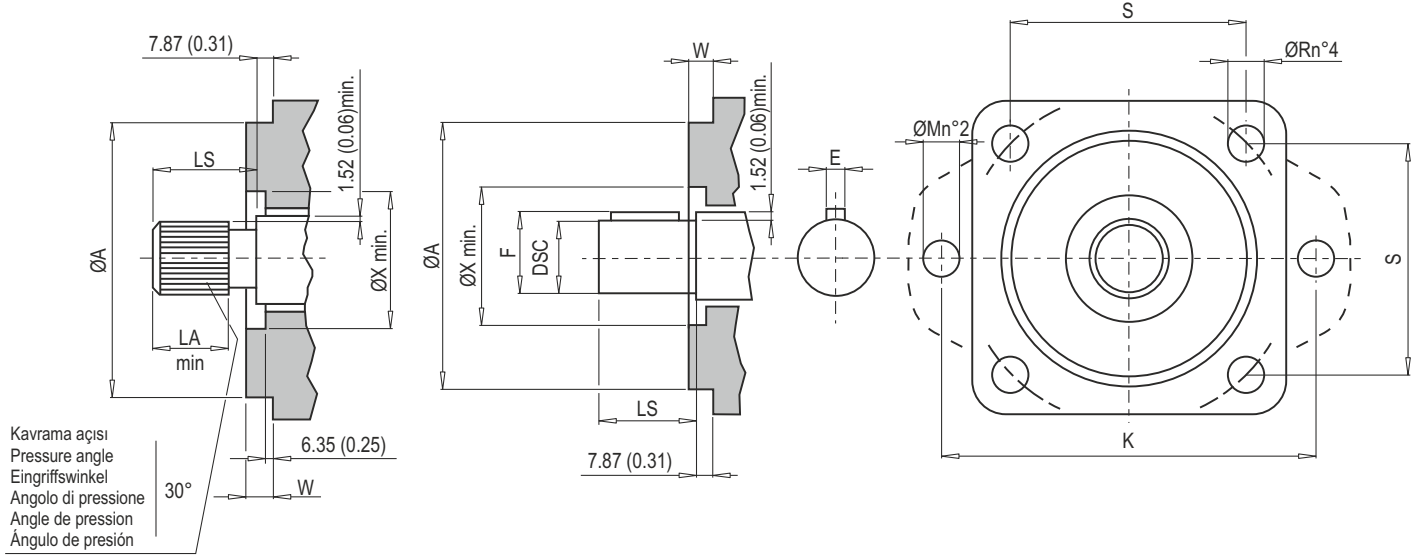
EN FLANGES FOR MOTORS ACCORDING
TO THE SAEJ STD

DE FLANSCHEN FÜR MOTORE NACH
SAEJ 744C-NORM

IT FLANGIATURE PER MOTORI
A NORME SAEJ 744C

FR BRIDAGES POUR MOTEURS AUX
NORMES SAEJ 744C

ES EMBRIDADOS PARA MOTORES
SEGÚN NORMAS SAEJ 744C



	A	W	X _{min}	K	M	S	R	Kayıcı milli Splined shaft Zahnwelle Albero cannelé Arbre cannelé Eje ranurado			Kamalı milli Parallel shaft Zylinderwelle Albero cilíndrico Arbre cylíndrique Eje cilíndrico			
								DP	LS	LA _{min}	DSC	LS	F	E
SAE A-A	50.80 (2.00)	6.35 (0.25)	— —	350.04 (13.785)	10.31 (0.406)	— —	— —	20/40 9T	19.05 (0.750)	5.08 (0.20)	12.70 (0.50)	19.05 (0.750)	14.07 (0.554)	3.175 (0.125)
SAE A	82.55 (3.250)	6.35 (0.25)	— —	106.37 (4.188)	11.10 (0.438)	— —	— —	16/32 9T	23.83 (0.938)	7.62 (0.30)	15.87 (0.625)	23.83 (0.938)	17.60 (0.693)	3.97 (0.1563)
SAE B	101.60 (4.00)	9.65 (0.38)	50.8 (2.00)	146.05 (5.75)	14.30 (0.562)	89.81 (3.536)	14.27 (0.562)	16/32 13T	33.32 (1.312)	10.16 (0.40)	22.22 (0.875)	33.32 (1.312)	24.94 (0.982)	6.35 (0.250)
SAE B-B	101.60 (4.00)	9.65 (0.38)	50.8 (2.00)	146.05 (5.75)	14.30 (0.562)	89.81 (3.536)	14.27 (0.562)	16/32 15T	38.10 (1.500)	12.70 (0.50)	25.40 (1.000)	38.10 (1.500)	28.10 (1.106)	6.35 (0.250)
SAE C	127 (5.00)	12.70 (0.50)	63.5 (2.50)	180.98 (7.125)	17.50 (0.688)	114.50 (4.508)	14.27 (0.562)	12/24 14T	47.63 (1.875)	15.24 (0.60)	31.75 (1.250)	47.63 (1.875)	35.20 (1.386)	7.94 (0.3125)
SAE C-C	127 (5.00)	12.70 (0.50)	63.5 (2.50)	180.98 (7.125)	17.50 (0.688)	114.50 (4.508)	14.27 (0.562)	12/24 17T	53.98 (2.125)	17.78 (0.70)	38.10 (1.500)	53.98 (2.125)	42.26 (1.664)	9.53 (0.375)
SAE D	152.40 (6.00)	12.70 (0.50)	69.85 (2.75)	228.60 (9.00)	20.60 (0.812)	161.65 (6.364)	20.63 (0.812)	8/16 13T	66.67 (2.625)	20.32 (0.80)	44.45 (1.750)	66.67 (2.625)	49.30 (1.941)	11.11 (0.4375)
SAE E	165.10 (6.50)	15.875 (0.625)	69.85 (2.75)	317.50 (12.5)	26.97 (1.062)	224.51 (8.839)	20.63 (0.812)	8/16 13T	66.67 (2.625)	20.32 (0.80)	44.45 (1.750)	66.67 (2.625)	49.30 (1.941)	11.11 (0.4375)
SAE F	177.80 (7.00)	15.875 (0.625)	69.85 (2.75)	317.50 (12.5)	26.87 (1.062)	247.52 (9.745)	26.98 (1.062)	8/16 15T	79.38 (3.125)	25.40 (1.00)	— —	79.38 (3.129)	— —	— —