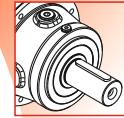
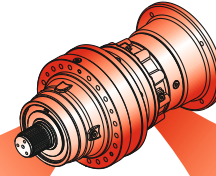


TEKNİK VERİLER / TECHNICAL DATA / TECHNISCHE DATEN / DATI TECNICI / DONNÉES TECHNIQUES / DATOS TÉCNICAS

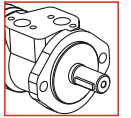
	i_{ges}	M_{max} (n ₂ x h: 20000) (Nm)
550001	3.84 ... 5.44	1186800
550002	14.13 ... 26.87	995400
550003	55.88 ... 161.24	827800
550004	198.69 ... 1088.38	756400
550005	1214.55 ... 7890.76	756400

OUTPUT

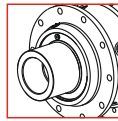
INPUT



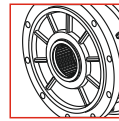
Ø28 - Ø42
Ø1"3/8 - Ø65 - Ø90



Hydraulic Motor

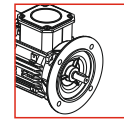


Ø320

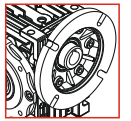


N300X8X9H
DIN 5480

PL



Electric Motor



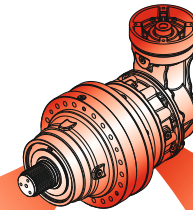
Worm gearboxes



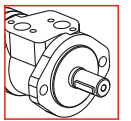
Brake

OUTPUT

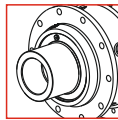
INPUT



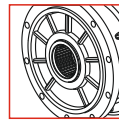
Ø1"3/8
Ø65



Hydraulic Motor

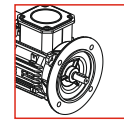


Ø320

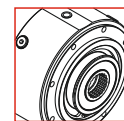


N300X8X9H
DIN 5480

PLB






Electric Motor



Brake

	i_{ges}	M_{max} (n ₂ x h: 20000) (Nm)
550005	819.22 ... 5079.11	756400

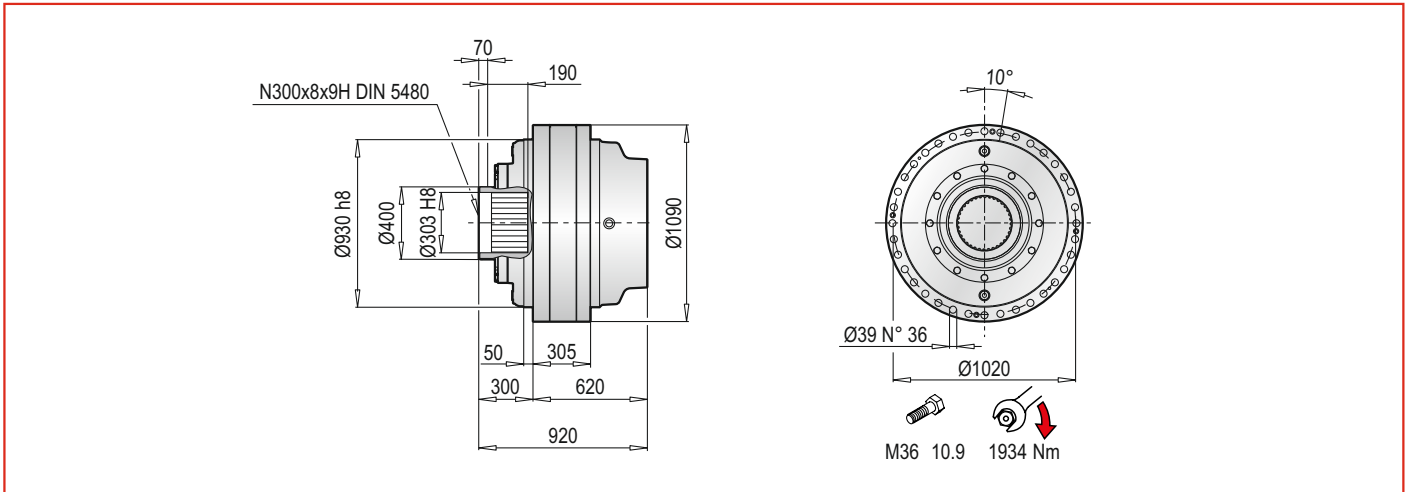
	Pt [kW]	n _{1max} [min ⁻¹]	i _{ges}	Mc [kNm]				Giriş- Input - Antrieb - Entrada - Entrée - Entrada				
				n ₂ x h	n ₂ x h	n ₂ x h	n ₂ x h				EL - EML EM - EP - ET	
				10.000	20.000	50.000	100.000					IEC (B5)
PL 550001	324	100	3.84	823.8	741.7	645.8	582.7	160 200 250 180 225 280	-	-		
			5.44	467.5	421.0	366.5	344.9					
PL 550002	185	200	14.13	729.3	622.1	472.6	383.8	160 200 250 180 225 280	-	-		
			18.97	525.0	472.8	411.6	370.7					
			26.87	467.5	421.0	366.5	344.9					
PL 550003	125	1200	55.88	584.5	517.3	440.2	383.8	160 225 180 250 200 280	-	-		
			75.02	525.0	472.8	411.6	370.7					
			96.03	525.0	472.8	410.7	363.5					
			106.27	467.5	421.0	366.5	344.9					
			136.05	467.5	421.0	366.5	344.9					
			161.24	467.5	421.0	366.5	344.9					
PL 550004	92	2000	198.69	521.3	461.4	392.5	347.4	160 180 200 225 250 280	110 130 150	ET 90		
			239.50	454.2	402.0	342.1	302.9					
			266.72	525.0	472.8	411.6	370.7					
			321.50	525.0	472.8	411.6	370.7					
			411.57	525.0	472.8	410.7	363.5					
			455.46	467.5	421.0	366.5	344.9					
			537.79	525.0	472.8	408.8	362.0					
			595.13	467.5	421.0	366.5	344.9					
			691.04	467.5	421.0	366.5	344.9					
			761.87	467.5	421.0	366.5	344.9					
			902.95	467.5	421.0	366.5	344.9					
			1088.38	467.5	421.0	366.5	344.9					
			PL 550005	75	2800	1214.55	525.0				472.8	411.6
1326.18	525.0	472.8				411.6	369.5					
1408.49	525.0	472.8				410.7	363.5					
1486.43	467.5	421.0				366.5	344.9					
1554.83	525.0	472.8				410.7	363.5					
1640.86	467.5	421.0				366.5	344.9					
1752.98	467.5	419.3				356.6	315.9					
1861.79	467.5	421.0				366.5	331.9					
1952.27	467.5	421.0				366.5	344.9					
2031.64	525.0	472.8				408.8	362.0					
2126.46	525.0	472.8				410.7	363.5					
2218.38	525.0	472.8				408.8	362.0					
2364.88	467.5	421.0				366.5	344.9					
2499.24	467.5	421.0				366.5	344.9					
2660.01	463.0	409.7				348.6	308.8					
2778.57	525.0	472.8				408.8	362.0					
2878.16	467.5	421.0				366.5	344.9					
3226.73	525.0	472.8				408.8	362.0					
4489.57	467.5	421.0				366.5	344.9					
5010.01	467.5	421.0				366.5	344.9					
6546.41	467.5	421.0	366.5	344.9								
7890.76	467.5	421.0	366.5	344.9								

	Pt [kW]	n _{1max} [min ⁻¹]	i _{ges}	Mc [kNm]				Giriş- Input - Antrieb - Entrada - Entrée - Entrada	
				n ₂ x h	n ₂ x h	n ₂ x h	n ₂ x h		
				10.000	20.000	50.000	100.000	IEC (B5)	EL - EML EM - EP - ET
PLB 550005	73	2500	819.22	525.0	432.3	328.4	266.8	160 180 200 225 250 280	EM 65 EM 1"3/8 Z6 EP 65
			864.55	467.5	421.0	341.1	277.1		
			987.46	525.0	472.8	374.3	304.2		
			1160.57	467.5	421.0	366.5	340.6		
			1244.71	485.6	394.2	299.3	243.0		
			1334.06	467.5	421.0	366.5	344.9		
			1398.90	467.5	421.0	366.5	344.9		
			1500.32	525.0	449.3	341.1	276.9		
			1593.45	525.0	468.7	355.8	288.9		
			1743.17	467.5	421.0	366.5	344.9		
			1827.89	467.5	421.0	366.5	344.9		
			1920.67	525.0	472.8	405.5	329.2		
			2125.46	467.5	421.0	366.5	344.9		
			2340.02	467.5	421.0	366.5	344.9		
			2509.68	525.0	472.8	408.8	362.0		
			2820.56	467.5	421.0	366.5	344.9		
			3224.83	467.5	421.0	366.5	344.9		
			4213.78	467.5	421.0	366.5	344.9		
			5079.11	467.5	421.0	366.5	344.9		



$$M_{\max} = M_C \times 1.6$$

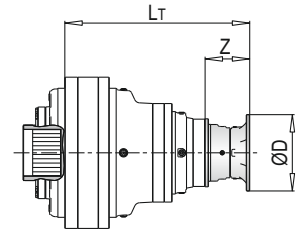
(n₂ x h = 20.000)



PL 550000 F - Elektrik Motor Adaptörleri (IEC) / Electric Motor Couplings (IEC) /Anbauvorrichtung Für Elektromotore (IEC) / Predisposizioni Per Motori Elettrici (IEC) / Adaptations Pour Moteurs Electriques (IEC) /Acoplamientos Para Motores Eléctricos (IEC)

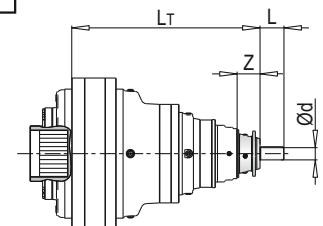
PL	IEC 160			IEC 180			IEC 200			IEC 225			IEC 250			IEC 280		
	L _T	Z	ØD	L _T	Z	ØD	L _T	Z	ØD	L _T	Z	ØD	L _T	Z	ØD	L _T	Z	ØD
550001	770			770			770			759			759			759		
550002	1053.5	150	350	1053.5	150	350	1053.5	150	400	1042.5	139	450	1042.5	139	550	1042.5	139	550
550003	1274.5			1274.5			1274.5			1263.5			1263.5			1263.5		
550004	1381.5			1381.5			1381.5			1370.5			1370.5			1370.5		
550005	1421	118		1421	118		1451	148		1442			1451.5	148.5		1451.5	148.5	

PL	IEC ~ Kg					
	160	180	200	225	250	280
550001	3260	3260	3265	3271	3283	3295
550002	3770	3770	3775	3781	3793	3805
550003	3965	3965	3970	3976	3988	4000
550004	4024	4024	4029	4035	4047	4059
550005	4022	4022	4032	4037	4078	4080



PL 550000 F - Giriş Milleri / Input Shafts / Antriebswellen / Alberi Entrata / Arbres D'entree / Ejes De Entrada

PL	EL C 28				EL C 42				EML 42				EML 1"3/8 Z6				EM 65				EM 1"3/8 Z6			
	L _T	Z	L	Ød	L _T	Z	L	Ød	L _T	Z	L	Ød	L _T	Z	L	Ød	L _T	Z	L	Ød	L _T	Z	L	Ød
550003	-	-	-	-	-	-	-	-	-	-	-	-	-	-	-	-	-	-	-	-	-	-	-	-
550004	-	-	-	-	-	-	-	-	-	-	-	-	-	-	-	-	-	-	-	-	-	-	-	-
550005	-	64	50	28	-	64	82	42	-	94	82	42	-	94	106	1"3/8	1424.5	121.5	105	65	1424.5	121.5	105	1"3/8



PL	EP 65				ET 90			
	L _T	Z	L	Ød	L _T	Z	L	Ød
550003	-	-	-	-	-	-	-	-
550004	-	-	-	-	1403	171.5	170	90
550005	1456	153	105	65	-	-	-	-

PL	~ Kg							
	EL C 28	EL C 42	EML 42	EML 1"3/8 Z6	EM 65	EM 1"3/8 Z6	EP 65	ET 90
550003	-	-	-	-	-	-	-	-
550004	-	-	-	-	-	-	-	4027
550005	-	-	-	-	4017	4017	4026	-

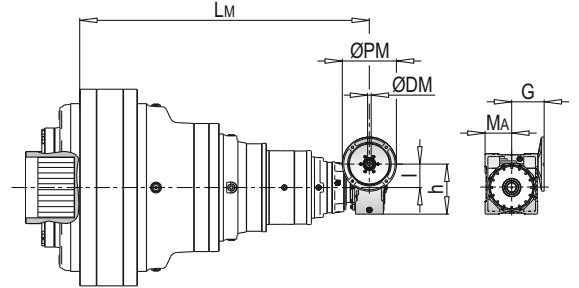
PL 550000 F - Sonsuz Dişlili Redüktör Adaptörleri (PMRV/PRV) / Worm Gearbox Adaptors (PMRV/PRV) / Anschluss Für Schneckengetriebe (PMRV/PRV) / Predisposizioni Per Riduttori A Vite Senza Fine (PMRV/PRV) / Adaptation Pour Reducteurs A Vis Sans Fin (PMRV/PRV) / Acoplamiento Para Reductores De Tornillo Sin Fin (PMRV/PRV)

PL	PMRV/PRV 050					PMRV/PRV 063					PMRV/PRV 075				
	L _M	I	h	M _A	G	L _M	I	h	M _A	G	L _M	I	h	M _A	G
550004	-					-					-				
550005	1424.5	50	110	60	80	1434	63	113	72	95	1413	75	161	86	112.5

PL	PMRV/PRV 090					PMRV/PRV 110					PMRV/PRV 130				
	L _M	I	h	M _A	G	L _M	I	h	M _A	G	L _M	I	h	M _A	G
550004	-					1365.5	110	237.5	127.5	160	1371	130	277.5	147.5	180
550005	1423	90	193	103	129.5	1437					1442.5				

PL	PMRV/PRV 150				
	L _M	I	h	M _A	G
550004	1387.5				
550005	1459	150	320	170	210

PL	PMRV/PRV ~ Kg						
	050	063	075	090	110	130	150
550004	-	-	-	-	4025	4042	4078
550005	4008	4012	4014	4019	4046	4063	4099

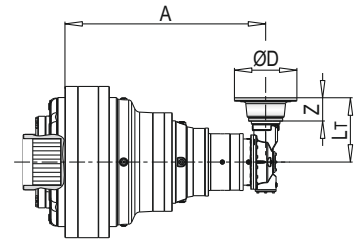


PLB 550000 F - Elektrik Motor Adaptörleri (IEC) / Electric Motor Couplings (IEC) / Anbauvorrichtung Für Elektromotore (IEC) / Predisposizioni Per Motori Elettrici (IEC) / Adaptations Pour Moteurs Electriques (IEC) / Acoplamientos Para Motores Eléctricos (IEC)

PLB	IEC 160				IEC 180				IEC 200				IEC 225			
	A	L _T	Z	ØD	A	L _T	Z	ØD	A	L _T	Z	ØD	A	L _T	Z	ØD
550005	1366.5	1421	118	350	1366.5	1421	118	350	1366.5	1451	148	400	1366.5	1442	139	450

PLB	IEC 250				IEC 280			
	A	L _T	Z	ØD	A	L _T	Z	ØD
550005	1366.5	1451.5	148.5	550	1366.5	1451.5	148.5	550

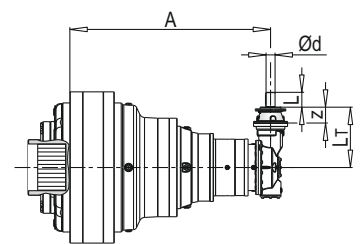
PLB	IEC ~ Kg					
	160	180	200	225	250	280
550005	4022	4022	4032	4037	4078	4090

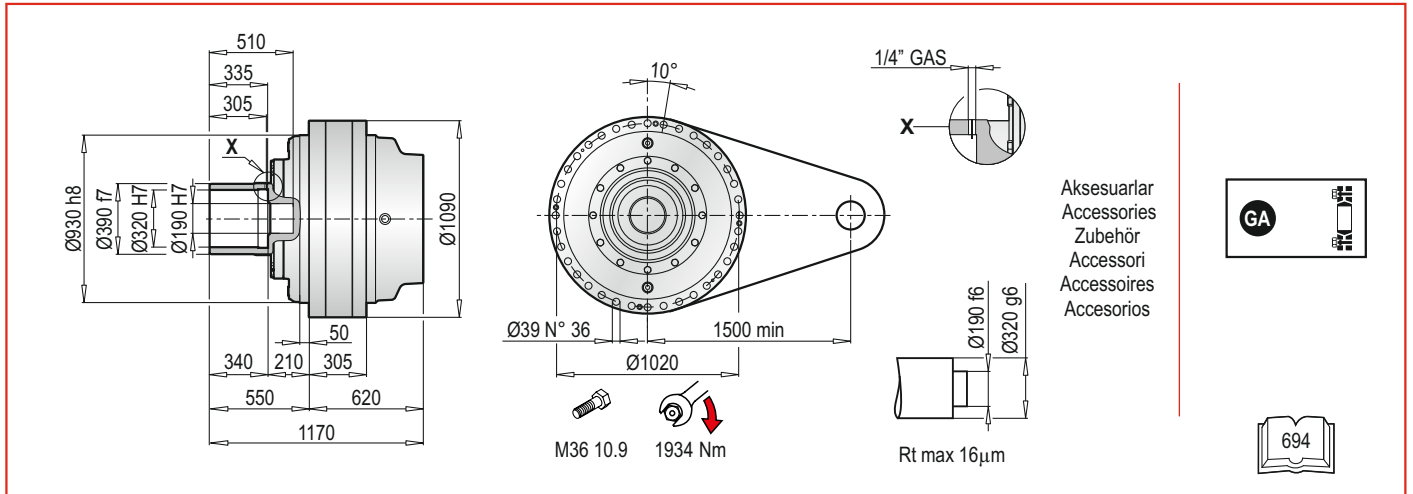


PLB 550000 F - Giriş Milleri / Input Shafts / Antriebswellen / Alberi Entrata / Arbres D'entree / Ejes De Entrada

PLB	EM 65					EM 1"3/8 Z6					EP 65				
	A	L _T	Z	L	Ød	A	L _T	Z	L	Ød	A	L _T	Z	L	Ød
550005	1366.5	436.5	121.5	105	65	1366.5	436.5	121.5	105	1"3/8	1366.5	468	153	105	65

PLB	~ Kg		
	EM 65	EM 1"3/8 Z6	EP 65
550005	4017	4017	4026

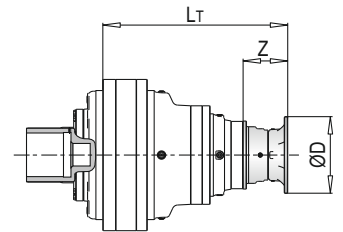




PL 550000 FS - Elektrik Motor Adaptörleri (IEC) / Electric Motor Couplings (IEC) / Anbauvorrichtung Für Elektromotore (IEC) / Predisposizioni Per Motori Elettrici (IEC) / Adaptations Pour Moteurs Electriques (IEC) / Acoplamientos Para Motores Eléctricos (IEC)

PL	IEC 160			IEC 180			IEC 200			IEC 225			IEC 250			IEC 280		
	L _T	Z	ØD	L _T	Z	ØD	L _T	Z	ØD	L _T	Z	ØD	L _T	Z	ØD	L _T	Z	ØD
550001	770			770			770			759			759			759		
550002	1053.5	150	350	1053.5	150	350	1053.5	150	400	1042.5	139	450	1042.5	139	550	1042.5	139	550
550003	1274.5			1274.5			1274.5			1263.5			1263.5			1263.5		
550004	1381.5			1381.5			1381.5			1370.5			1370.5			1370.5		
550005	1421	118		1421	118		1451	148		1442			1451.5	148.5		1451.5	148.5	

PL	IEC ~ Kg					
	160	180	200	225	250	280
550001	3317	3317	3322	3328	3340	3352
550002	3827	3827	3832	3838	3850	3862
550003	4022	4022	4027	4033	4045	4057
550004	4081	4081	4086	4092	4104	4116
550005	4079	4079	4089	4094	4135	4137



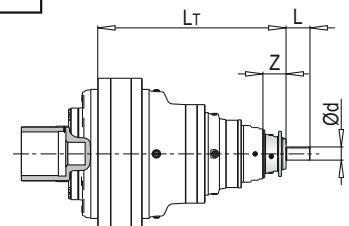
PL 550000 FS - Giriş Milleri / Input Shafts / Antriebswellen / Alberi Entrata / Arbres D'entree / Ejes De Entrada

PL	EL C 28				EL C 42				EML 42				EML 1"3/8 Z6				EM 65				EM 1"3/8 Z6			
	L _T	Z	L	Ød	L _T	Z	L	Ød	L _T	Z	L	Ød	L _T	Z	L	Ød	L _T	Z	L	Ød	L _T	Z	L	Ød
550003	-	-	-	-	-	-	-	-	-	-	-	-	-	-	-	-	-	-	-	-	-	-	-	-
550004	-	-	-	-	-	-	-	-	-	-	-	-	-	-	-	-	-	-	-	-	-	-	-	-
550005	-	64	50	28	-	64	82	42	-	94	82	42	-	94	106	1"3/8	1424.5	121.5	105	65	1424.5	121.5	105	1"3/8



PL	EP 65				ET 90			
	L _T	Z	L	Ød	L _T	Z	L	Ød
550003	-	-	-	-	-	-	-	-
550004	-	-	-	-	1403	171.5	170	90
550005	1456	153	105	65	-	-	-	-

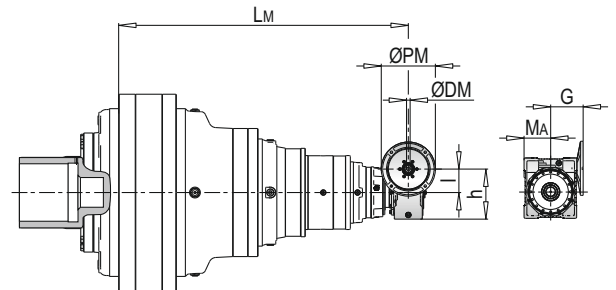
PL	~ Kg						
	EL C 28	EL C 42	EML 42	EML 1"3/8 Z6	EM 65	EM 1"3/8 Z6	EP 65
550003	-	-	-	-	-	-	-
550004	-	-	-	-	-	-	4084
550005	-	-	-	-	4074	4074	4083



PL 550000 FS - Sonsuz Dişli Redüktör Adaptörleri (PMRV/PRV) / Worm Gearbox Adaptors (PMRV/PRV) / Anschluss Für Schneckengetriebe (PMRV/PRV) / Predisposizioni Per Riduttori A Vite Senza Fine (PMRV/PRV) / Adaptation Pour Reducteurs A Vis Sans Fin (PMRV/PRV) / Acoplamiento Para Reductores De Tornillo Sin Fin (PMRV/PRV)

PL	PMRV/PRV 050					PMRV/PRV 063					PMRV/PRV 075				
	L _M	I	h	M _A	G	L _M	I	h	M _A	G	L _M	I	h	M _A	G
550004	-					-					-				
550005	1424.5	50	110	60	80	1434	63	113	72	95	1413	75	161	86	112.5

PL	PMRV/PRV 090					PMRV/PRV 110					PMRV/PRV 130				
	L _M	I	h	M _A	G	L _M	I	h	M _A	G	L _M	I	h	M _A	G
550004	-					1365.5	110	237.5	127.5	160	1371	130	277.5	147.5	180
550005	1423	90	193	103	129.5	1437					1442.5				



PL	PMRV/PRV 150				
	L _M	I	h	M _A	G
550004	1387.5				
550005	1459	150	320	170	210

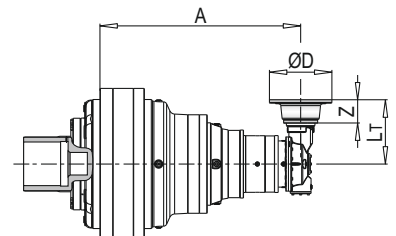
PL	PMRV/PRV ~ Kg						
	050	063	075	090	110	130	150
550001	-	-	-	-	4082	4099	4135
550002	4065	4069	4071	4076	4103	4120	4156

PLB 550000 FS - Elektrik Motor Adaptörleri (IEC) / Electric Motor Couplings (IEC) / Anbauvorrichtung Für Elektromotore (IEC) / Predisposizioni Per Motori Elettrici (IEC) / Adaptations Pour Moteurs Electriques (IEC) / Acoplamientos Para Motores Eléctricos (IEC)

PLB	IEC 160				IEC 180				IEC 200				IEC 225			
	A	L _T	Z	ØD	A	L _T	Z	ØD	A	L _T	Z	ØD	A	L _T	Z	ØD
550005	1366.5	1421	118	350	1366.5	1421	118	350	1366.5	1451	148	400	1366.5	1442	139	450

PLB	IEC 250				IEC 280			
	A	L _T	Z	ØD	A	L _T	Z	ØD
550005	1366.5	1451.5	148.5	550	1366.5	1451.5	148.5	550

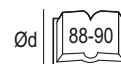
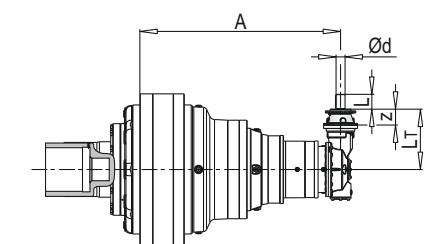
PLB	IEC ~ Kg					
	160	180	200	225	250	280
550005	4079	4079	4089	4094	4135	4147



PLB 550000 FS - Giriş Milleri / Input Shafts / Antriebswellen / Alberi Entrata / Arbres D'entree / Ejes De Entrada

PLB	EM 65					EM 1"3/8 Z6					EP 65				
	A	L _T	Z	L	Ød	A	L _T	Z	L	Ød	A	L _T	Z	L	Ød
550005	1366.5	436.5	121.5	105	65	1366.5	436.5	121.5	105	1"3/8	1366.5	468	153	105	65

PLB	~ Kg		
	EM 65	EM 1"3/8 Z6	EP 65
550005	4074	4074	4083



AKSESUARLAR / ACCESSORIES / ZUBEHÖR / ACCESSORI / ACCESSOIRES / ACCESORIOS

GA Konik sıkırma / Shrink disc / Schrumpfscheibe
Giunto di attrito / Frette de serrage / Disco de contracción

